

ZAXIS-7 series

HITACHI

Reliable Solutions

ZAXIS SUPER LONG FRONT RANGE



HYDRAULIC EXCAVATORS

Model code : ZX130LCN-7 / ZX210LC-7
Working range : 13 m / 15 m

Model code : ZX250LC-7 / ZX250LCN-7 /
ZX300LC-7 / ZX300LCN-7 / ZX350LC-7 /
ZX350LCN-7
Working range : 15 - 18 m

Model code : ZX350LC-7 / ZX350LCN-7
Working range : 20 - 22 m

Model code : ZX490LCH-7
Working range : 16 m

You're in control

You're at the heart of Hitachi's design for its latest range of excavators. To continuously improve on previous generation machines we've focused on enhancing your experience in the cab as an operator.

We've considered the challenges you face as the owner of a successful business. And we've zoomed in on the ways in which we can support you over the life cycle of your machine.

By putting you at the heart of the Zaxis-7 range, we invite you to take control – over your workspace and your fleet. And by working in partnership, we will help you to create your vision.

Scan to view a film of the Zaxis-7 super long front excavators and discover their capabilities





Inside



In control of your business

8. Improve your profit



In control of your comfort

10. Feel the difference



In control of your environment

12. Increase your safety



In control of your assets

14. Boost your uptime



In control of your fleet

16. Manage your machine



In control of your uptime

18. Protect your investment



In control of your performance

20. Get more from your machine

Complete control

The new Zaxis-7 super long front excavators put you firmly in control, so you can feel assured of their performance when slope finishing, loading and dredging, and supported by the technological expertise and services that Hitachi provides.



Vibration in the cab is reduced by up to 27% during travelling and heavy-duty operation thanks to new viscous mounts providing optimum suspension.



Integrated console and seat suspension gives a greater sense of control, and helps to reduce fatigue.



The boom and arm design combines strength and flexibility for the machine's extended working range.



Sensors monitor oil continuously and contribute to preventative maintenance, helping to reduce downtime.



ConSite Pocket app allows you to manage and monitor your fleet remotely.



Options such as Hitachi ground engaging tools enable you to enhance the performance of your excavator.



Visibility is excellent thanks to the Aerial Angle camera system, new LCD monitor and new parallel wiper.



Pressure settings of the main control valve are optimised for deep digging and unloading to enhance controllability.



The ECO gauge on the monitor indicates how to lower fuel consumption and reduce costs.



The centralised greasing point has all five points in one place for quick daily maintenance.



The improved TRIAS III hydraulic system reduces fuel consumption and increases efficiency.



1

2

3

4

5

16

15

6

7

14

13

8

9

11

12

10

Control zone

Enhanced comfort and safety features are at your fingertips in the refined cab of Zaxis-7 excavators, giving you the power to perform productively, with ease and reduced fatigue.

- 1 **Increased sweeping area of windscreen wiper** enhances visibility in difficult working conditions.
- 2 **Air conditioning and audio** are easily controlled via the monitor.
- 3 **Low-reflective colour 8" LCD monitor** is easy to view and navigate.
- 4 **USB socket and smartphone holder** helps you stay connected.
- 5 **Drinks holder** is easy to detach for cleaning.
- 6 **Additional joystick controls** for effortless operation.
- 7 **Ergonomic design** gives you convenient access to controls.
- 8 **Bluetooth®** for hands-free calls and **DAB+** radio for music while you work.
- 9 **Multifunctional control panel** makes operation easier.
- 10 **Improved sound isolation** makes this one of the quietest cabs in the market.
- 11 **User-friendly storage space** keeps your workspace tidy and clutter-free.
- 12 **Coat hooks** take care of your personal belongings.
- 13 **One-touch adjustment lever for console** so you can work comfortably in the optimum position.
- 14 **Integrated console and seat suspension** gives a greater sense of control and helps to reduce fatigue.
- 15 **Increased legroom** creates a more spacious cab.
- 16 **Optimal pedal layout** helps to reduce fatigue.



Operation is easy with ergonomically designed controls and switches.



Bluetooth® connection for hands-free calls while you work.

In control of your business



Improve your profit

The success of your business depends on the reliability and efficiency of your construction machinery. With Hitachi Zaxis-7 super long front excavators, you can count on the highest quality, the ultimate in operating comfort and reduced running costs – all of which will have a positive impact on your bottom line.

You can look forward to increasing your profits thanks to the impressive fuel economy of these Stage-V compliant machines. They deliver up to 11% less fuel consumption than previous models.

Hitachi's industry-leading hydraulic system, the new TRIAS III, ensures that this incredible level of performance is achieved in every application. Its superior efficiency excels on dredging, grading, loading or deep digging operations.

Your operators can also control fuel efficiency – and reduce costs – by using the all-new ECO gauge. This is clearly visible on the multifunctional colour LCD eight-inch monitor.

In addition, you can boost your profits by working on a wider range of projects thanks to their excellent versatility. Different attachments and buckets are quickly changed using the enhanced attachment support system on the monitor. Assist piping on the boom and arm enables the tilt and rotation of buckets. Your operators can also expect enhanced manoeuvrability on different types of terrain.

The pilot pressure of the main control valve is set to a lower level than standard excavators, resulting in reduced oil flow and hydraulic speed of swing and boom movements, and enhancing controllability of the boom and arm.

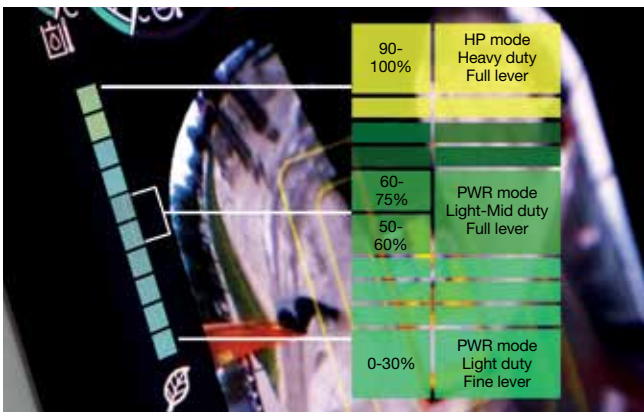
The super long front machines are also easy to move from one job site to another as they have been designed for optimal transport height and stability during transit.



A fuel saving of up to 11% is achieved with the TRIAS III hydraulic system.



Long or narrow undercarriage options suit various working conditions.



The ECO gauge helps to deliver better fuel consumption.



Optimal transport height and stability during transit.



You're in control with a spacious, tidy and enjoyable working environment.



The cab has ample space for your belongings.



The LCD monitor is easy to view with hi-res anti-glare screen.



In control of your comfort



Feel the difference

Hitachi's redesigned, state-of-the-art Zaxis-7 excavator cab gives you the perfect working environment. Ultra-spacious, it is industry-leading and offers the ultimate in comfort and quality, as well as the lowest noise levels in the market and up to 27% less vibration than the previous generation.

Feel the difference with the synchronised motion of the seat and console, designed to ensure you feel less tired at the end of the working day. Stretch out in the most spacious Hitachi cab yet, with improved pedal layout, ample head clearance and legroom. And sit comfortably thanks to the easily adjustable console height with three positions to choose from.

Easy operation comes from the new ergonomic design of the console and switches, and convenient access to controls. You can navigate quickly through the menu on the 8" LCD monitor with the multifunctional controller. The hi-res anti-glare screen is also easier to view, and the refreshed layout offers a clear display and desirable functionality – such as air conditioning, DAB+ radio and Bluetooth®.

With more storage for your personal belongings, such as your coat, smartphone and drink, you'll feel instantly relaxed and ready for your shift. Added practical functions to the joysticks, such as wiper, engine idle and audio mute controls, will make your working day effortless and enjoyable.



Ergonomic multifunctional control panel provides easy access.

In control of your environment



Aerial Angle®

Increase your safety

Your ability to work safely is vital, not only for your own wellbeing, but also for the successful completion of any project. To protect yourself and your machine from potential hazards, the new Hitachi Zaxis-7 super long front excavators give you a superior view of your surroundings, so you can see the job site from all angles.

The visibility you enjoy from the cab includes an exceptional 270-degree bird's-eye view with the Aerial Angle® camera system. You can choose from six image options to view the machine's immediate environment, which enables you to control your own safety – as well as that of those around you.

To help you to work more confidently and efficiently, even in the most challenging of conditions, Zaxis-7 super long front excavators are fitted with some impressive new features, including LED work lights.

The stability of the machine is enhanced by the counterweight system, which balances the additional load of the super long front equipment. It offsets dynamic forces, adjusting the centre of gravity, enhancing safety and performance.

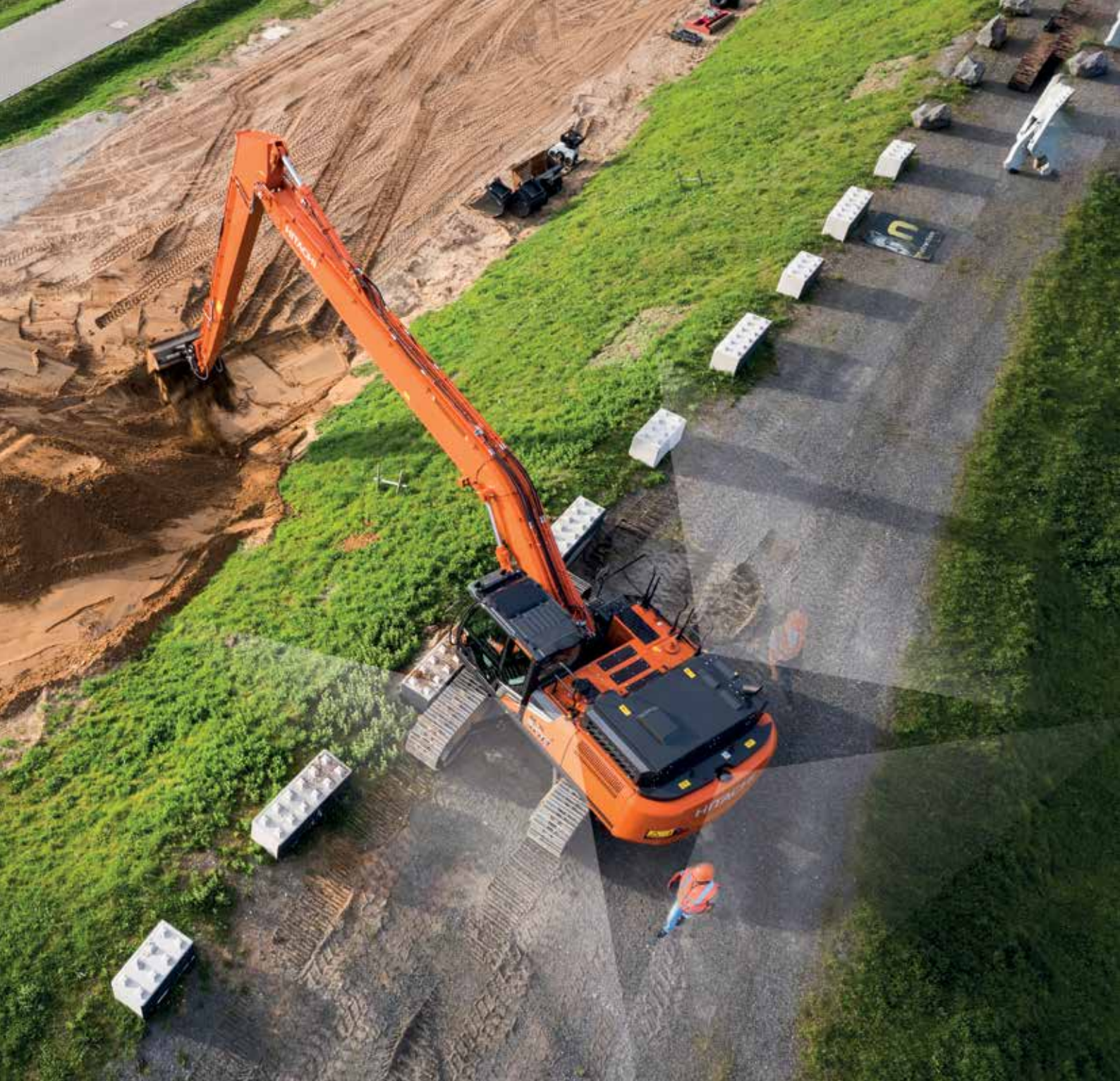
Another important safety feature is the hose rupture valve. If it detects rapid loss of hydraulic oil pressure, it quickly closes the hydraulic cylinder to ensure operator safety and minimal damage to your equipment.



The pilot shutoff lever offers enhanced safety in the cab.



Hose rupture valve protects personnel and equipment.



Control your safety with the 270-degree view Aerial Angle® camera system.



Choose between different image layouts to suit your working environment.



LED work lights improve visibility in challenging conditions.



Durable after-treatment system prevents downtime.



The centralised greasing point combines all five points in one for easy maintenance.



Maintenance is easy at ground level.



Engine cover enables convenient access for daily inspections.



Designed for durability and easy maintenance, Zaxis-7 excavators increase uptime and reduce the total cost of ownership.



In control of your assets



Boost your uptime

Completing a project on time and on budget depends on the ability of your construction equipment to perform all day, every day. That's why Hitachi owners have profited from generations of ultra-reliable and durable machinery – and the Zaxis-7 range is no exception.

The latest Hitachi super long front excavators have been built to last, so that you can remain in complete control of your assets. They have been tested rigorously and continuously at dedicated facilities in Japan with the goal of significantly boosting your uptime.

As a result, a wide range of durable new components have been fitted to the latest Stage-V compliant machines. In addition, most parts are interchangeable with standard Hitachi machines, which facilitates easy maintenance and ensures maximum availability.

Downtime is also minimised by the priority given to easy maintenance and cleaning – with wide door and cover openings providing convenient access – saving you time and money.



Manage your machine

Hitachi offers a wide range of after-sales services to help you feel in total control of your fleet and workload. These initiatives give you access to vital data and tools to manage your machine.

Remote monitoring systems Owner's Site and ConSite send operational data daily via GPRS or satellite from your excavator to www.globaleservice.com. This includes: ratios of operating hours to enhance efficiency; fuel consumption to manage running costs; and machine location for planning purposes. ConSite summarises the information in a monthly email.

The ConSite Pocket App sends you real-time alerts for issues arising with your machine. You'll receive recommendations on what to do and step-by-step help guides. The app also enables you to see the location of your fleet.

A unique innovation continuously monitors the quality of engine and hydraulic oil, 24/7. Data is transmitted daily via two oil sensors to Global e-Service. These detect if the oil quality has deteriorated, due to contamination or low viscosity. If this happens, you and your authorised Hitachi dealer will receive an alert.

This innovative feature provides accurate estimations of when oil changes are required. It reduces maintenance and unscheduled downtime, and gives you peace of mind thanks to scheduled servicing and ultimately a higher resale value.



The unique oil sensor reduces maintenance and downtime.



A wide range of data on Global e-Service enhances efficiency.



The alerts on the ConSite Pocket App provide real-time information.



Hitachi offers a wide range of after-sales services for planning maintenance and managing running costs.



Hitachi provides the highest level of technical support.



Minimise downtime with Hitachi Genuine Parts.



HELP extended warranties and service contracts provide optimal performance.



Hitachi Premium Rental enables you to pay as you earn.



In control of your uptime



Protect your investment

If your machine will be working in severe conditions, or you want to minimise repair costs, you can take advantage of a unique extended warranty programme called HELP (Hitachi Extended Life Program) and comprehensive service contracts. These can help to optimise performance, reduce downtime and ensure a higher resale value.

We apply the same technological expertise to our wide range of high-quality parts as we do our machines. As a result, you can minimise unscheduled downtime and ensure maximum availability.

The parts range includes Hitachi Genuine Parts, Performance Parts, filters, undercarriages, and remanufactured components. We also offer ground engaging tools and buckets, which have been manufactured to the same exacting standards.

As your business grows, you may need to extend your fleet to meet the demands of new contracts. Why not try before you buy with the Hitachi Premium Rental programme? This gives you immediate access to Zaxis-7 super long front excavators for a period of one month to a year.

Along with the reliability, quality and service you would expect from the Hitachi brand, Hitachi Premium Rental offers flexible contracts and fixed costs that make it easier for you to budget.

In control of your performance



GET more from your machine

Designed to work in perfect harmony with your machine, Hitachi's durable hydraulic buckets and Ground Engaging Tools (GET) will increase your profit by maximising productivity and uptime. Manufactured to the same high standards as all Hitachi construction equipment, they offer unrivalled reliability and exceptional performance.

Buckets

You can increase the versatility of your excavator by choosing the right bucket for the job. For loading light materials, slope finishing, dredging, draining or grass mowing, you have a wide range of options to choose from – including GD, HD and XHD buckets with different capacities and widths.

Ground engaging tools

You can enhance the digging power and productivity of your excavator with Hitachi GET. Quick and safe to install and replace, they fit precisely to your attachments and can be tailored to suit the task. Using Hitachi GET can reduce your maintenance costs and downtime, lower fuel consumption and enhance the overall performance of your machine.



Hitachi buckets and GET are manufactured to the same high standards as all Hitachi construction equipment.



Hitachi buckets can be customised to suit the application.



Hitachi GET include self-sharpening teeth and reliable adapters to ensure a precise fit.



EH dump trucks and EX ultra-large excavators



Zaxis medium excavators



Create your vision

In control of your world

When you take delivery of your machine, you become part of the latest generation of a global family. With a 70-year heritage in designing hydraulic excavators, and a reputation as the industry's leading mining machine manufacturer, the Hitachi Construction Machinery network will give you access to a range of exceptional equipment.

Our excavators, wheel loaders, rigid dump trucks and special application machines incorporate advanced technology and pioneering expertise. Made at state-of-the-art facilities, they are built to the highest standards. You'll also benefit from market-leading services and initiatives, such as Premium Rental and Premium Used, which have been created to enhance your experience as a customer.

Whatever vision you wish to create, Hitachi Construction Machinery has the product, people, solutions and services you need to make it become a reality – and empower you to take control of your world.



ZW wheel loaders



Mini excavators

Range overview

Find the perfect fit

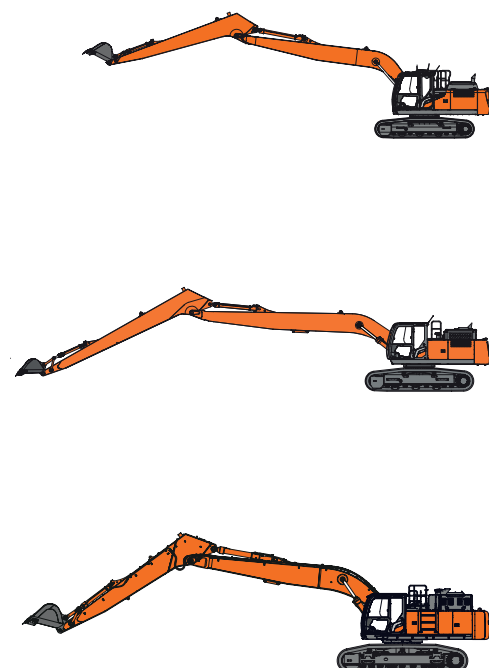
Hitachi offers a wide range of super long front (SLF) excavators with various loading capacities and reach capabilities so that you can find the perfect machine to meet your needs. Choose the standard base model with the operating weight and working range you require for your application.

Specifications of every model are available in detail in the appendix



LC = Long crawler
LCN = Long crawler narrow width

Model	Working range (m)	Operating weight (kg)	Maximum digging reach (m)	Maximum digging depth (m)
-------	-------------------	-----------------------	---------------------------	---------------------------



ZX130LCN-7	13	14,700 - 15,300	13.22	10.15
ZX210LC-7	15	24,300 - 25,200	15.38	11.52
ZX250LC-7	15 - 18	28,700 - 30,000	15.07	10.87
ZX250LCN-7			18.2	12.76
ZX300LC-7	15 - 18	33,100 - 34,300	15.75	10.62
ZX300LCN-7			18.18	12.55
ZX350LC-7	15 - 18	38,100 - 39,500	15.96	11.4
ZX350LCN-7			18.13	13.06
ZX350LCN-7			18.13	13.06
ZX350LC-7	20 - 22	37,900 - 39,200	20.26	14.91
ZX350LCN-7			22.07	16.43
ZX350LCN-7			22.07	16.43
ZX490LCH-7	16	52,400 - 53,200	20.34	12.67

SPECIFICATIONS

ZX130LCN TYPE HE13 SUPER LONG FRONT

ENGINE

Model.....	TOYOTA 1KDE
Type	4-cycle water-cooled, common rail direct injection
Aspiration	Turbocharged, intercooled, cooled EGR
Aftertreatment	DOC+CSF system
No. of cylinders	4
Rated power	
ISO 14396 : 2002	74 kW at 2 000 min ⁻¹
ISO 9249 : 2007	73 kW at 2 000 min ⁻¹
Maximum torque	390 Nm at 1 700 min ⁻¹
Piston displacement	2.982 L
Bore and stroke.....	96 mm x 103 mm
Batteries.....	2 x 12 V / 74 Ah

HYDRAULIC SYSTEM

Hydraulic Pumps

Main pumps.....	2 variable displacement axial piston pump
Maximum oil flow	2 x 117 L/min
Pilot pump	1 gear pump
Maximum oil flow	33.6 L/min

Hydraulic Motors

Travel.....	2 variable displacement axial piston motors
Swing	1 axial piston motor

Relief Valve Settings

Implement circuit	34.3 MPa
Swing circuit	27.8 MPa
Travel circuit	34.3 MPa
Pilot circuit	3.9 MPa
Power boost	36.3 MPa

Hydraulic Cylinders

	Quantity	Bore	Rod diameter
Boom	2	105 mm	70 mm
Arm	1	115 mm	80 mm
Bucket	1	85 mm	55 mm

UPPER STRUCTURE

Revolving Frame

D-section frame for resistance to deformation.

Swing Device

Axial piston motor with planetary reduction gear is bathed in oil. Swing circle is single-row. Swing parking brake is spring-set/hydraulic-released disc type.
Swing speed 9.2 min⁻¹ (rpm)
Swing torque 29.3 kNm (2 990 kgfm)

Operator's Cab

Independent spacious cab, 1 005 mm wide by 1 675 mm high, conforming to ISO* Standards.

* International Organization for Standardization

UNDERCARRIAGE

Tracks

Heat-treated connecting pins with dirt seals. Hydraulic (grease) track adjusters with shock-absorbing recoil springs.

Numbers of Rollers and Shoes on Each Side

Upper rollers.....	2
Lower rollers.....	7
Upper rollers	46
Track guard	1

Travel Device

Each track driven by 2-speed axial piston motor. Parking brake is spring-set/hydraulic-released disc type.

Automatic transmission system : High-Low.

Travel speeds	High : 0 to 5.5 km/h
	Low : 0 to 3.3 km/h

Maximum traction force 117 kN

Gradeability 58% (30 degree) continuous

ENVIRONMENT

Engine Emissions

EU Stage V

Sound Level

ZX130-7

Sound level in cab according to ISO 6396 : 2008 Lpa 69 dB(A)

External sound level according to ISO 6395 : 2008 and

EU Directive 2000/14/EC LwA 98 dB(A)

Air Conditioning System

The air conditioning system contains fluorinated greenhouse gases.

Refrigerant type : HFC-134a, GWP : 1430, Amount : 0.85 kg, CO_{2e} 1.22 ton.

SERVICE REFILL CAPACITIES

Fuel tank	285.0 L
Engine coolant	19.0 L
Engine oil	19.1 L
Swing device	3.2 L
Travel device (each side)	4.2 L
Hydraulic system	198 L
Hydraulic oil tank	82.0 L

SPECIFICATIONS

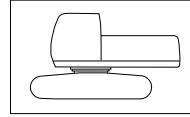
WEIGHTS AND GROUND PRESSURE

ZX130LCN TYPE HE13 SUPER LONG FRONT:

Equipped with 7.70 m monoblock boom, 5.30 m arm and 0.28 m³ bucket (SAE, PCSA heaped), 3 700 kg counterweight.

Shoe type	Shoe width	Operating weight	Ground pressure
Triple grouser	500 mm	14 900 kg	45 kPa (0.46 kgf/cm ²)
	600 mm	15 200 kg	38 kPa (0.39 kgf/cm ²)
	700 mm	15 400 kg	33 kPa (0.34 kgf/cm ²)

Basic Machine Weight and Overall width



Excluding front end attachment.
Including counterweight.

ZX130LCN

Shoe width	Weight	Overall width
500 mm	12 400 kg	2 490 mm
600 mm	12 600 kg	2 590 mm
700 mm	12 800 kg	2 690 mm

BUCKET SPECIFICATIONS AND COMPATIBILITY

ZX130LCN

	Capacity ISO heaped	Width Without side cutters	Weight	Recommendation
				ZX130LCN
				HE13
Bucket radius 1 060 mm	0.13 m ³	360 mm	140 kg	◎
	0.17 m ³	450 mm	170 kg	◎
	0.19 m ³	490 mm	180 kg	◎
	0.23 m ³	560 mm	190 kg	◎
	0.28 m ³	660 mm	210 kg	◎
	0.33 m ³	770 mm	230 kg	□
Slope finishing	-	1 500 mm	250 kg	◇
Max. weight				750 kg

◎ Suitable for materials with density of 1 800 kg/m³ or less

○ Suitable for materials with density of 1 600 kg/m³ or less

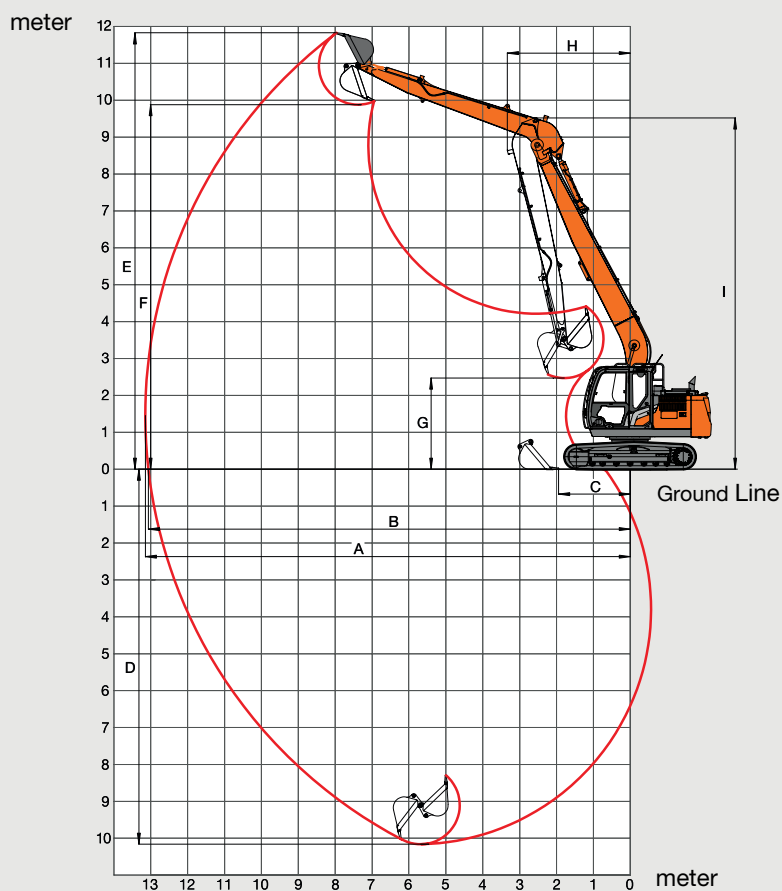
□ Suitable for materials with density of 1 100 kg/m³ or less

◇ Slope-finishing service

SPECIFICATIONS

ZX130LCN TYPE HE13 SUPER LONG FRONT

WORKING RANGES



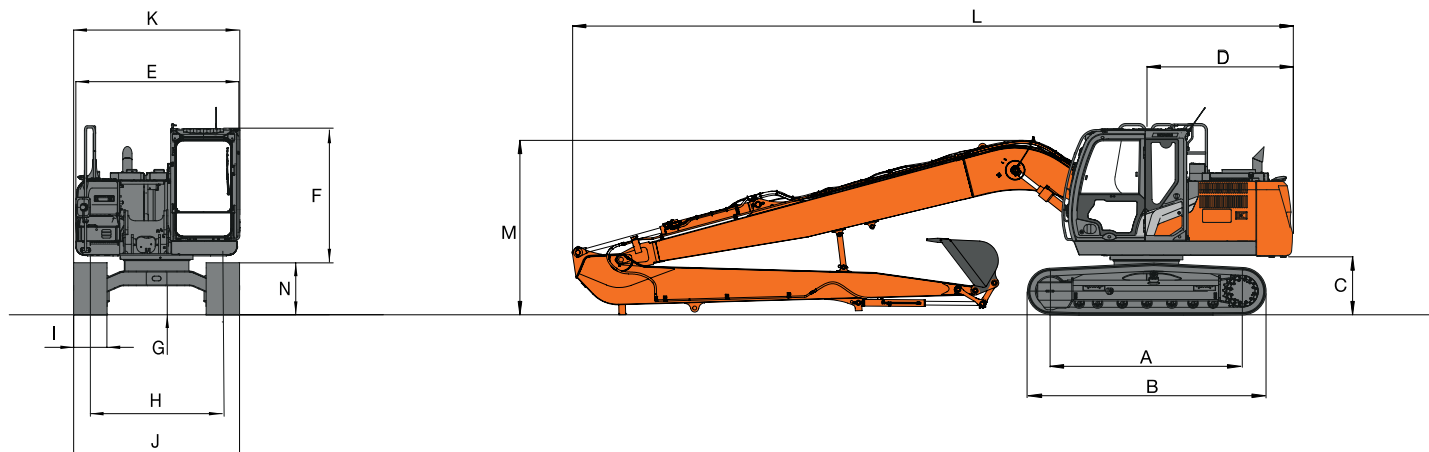
Unit: mm

	ZX130LCN TYPE HE13
A Max. digging reach	13 140
B Max. digging reach (on ground)	13 060
C Min. level crowding distance	1 940
D Max. digging depth	10 160
E Max. cutting height	11 820
F Max. dumping height	9 880
G Min. dumping height	2 470
H Min. swing radius	3 330
I Min. swing radius height	9 520
Bucket digging force ISO	39 kN
Arm crowd force ISO	27 kN

- Excluding track shoe lug

SPECIFICATIONS

DIMENSIONS



Unit: mm

	ZX130LCN TYPE HE13
A Distance between tumblers	3 050
B Undercarriage length	3 750
* C Counterweight clearance	840
D Rear-end swing radius	2 190
E Overall width of upper structure	2 460
F Overall height of cab	2 790
* G Min. ground clearance	410
H Track gauge	1 990
I Track shoe width	G 500 / G 600 / G 700
J Undercarriage width	2 490 / 2 590 / 2 690
K Overall width	2 490 / 2 590 / 2 690
L Overall length	10 770
M Overall height of boom	2 580
N Track height with triple grouser shoes	790

* Excluding track shoe lug G: Triple grouser shoe

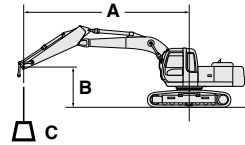
LIFTING CAPACITIES

Metric measure

Notes: 1. Ratings are based on ISO 10567.

- Lifting capacity of the ZAXIS series does not exceed 75% of tipping load with the machine on firm, level ground or 87% full hydraulic capacity.
- The load point is the center-line of the bucket pivot mounting pin on the arm.
- * Indicates load limited by hydraulic capacity.
- 0m = Ground.

For lifting capacities, subtract bucket and quick hitch weight from lifting capacities.



A: Load radius
B: Load point height
C: Lifting capacity

ZX130LCN HE13 SUPER LONG FRONT



Rating over-front



Rating over-side or 360 degrees

Unit: kg

Conditions	Load point height m	Load radius													
		2m		3m		4m		5m		6m		7m		8m	
		Front	360°	Front	360°	Front	360°	Front	360°	Front	360°	Front	360°	Front	360°
Boom: 7.7 m Arm 5.3 m Counterweight: 3 300 kg Additional counterweight: 400 kg 500 mm shoe	11														
	10													1 190*	1 190*
	9													1 190*	1 190*
	8													1 200*	1 200*
	7													1 240*	1 240*
	6													1 310*	1 310*
	5										1 500*	1 500*	1 410*	1 410*	
	4							2 100*	2 100*	1 840*	1 840*	1 660*	1 660*	1 530*	1 530*
	3			4 450*	4 450*	3 160*	3 160*	2 510*	2 510*	2 110*	2 110*	1 850*	1 850*	1 660*	1 660*
	2			1 870*	1 870*	3 860*	3 860*	2 930*	2 930*	2 390*	2 390*	2 040*	1 960*	1 800*	1 610*
	1			1 240*	1 240*	3 170*	3 170*	3 300*	2 880*	2 640*	2 270*	2 220*	1 840*	1 930*	1 520*
	0 (Ground)			1 310*	1 310*	2 540*	2 540*	3 570*	2 700*	2 850*	2 140*	2 380*	1 740*	2 050*	1 450*
	-1	1 110*	1 110*	1 560*	1 560*	2 490*	2 490*	3 750*	2 580*	3 000*	2 040*	2 500*	1 670*	2 140*	1 390*
	-2	1 470*	1 470*	1 870*	1 870*	2 670*	2 670*	3 830*	2 520*	3 090*	1 980*	2 580*	1 620*	2 210*	1 350*
	-3	1 820*	1 820*	2 220*	2 220*	2 970*	2 970*	3 830*	2 510*	3 120*	1 950*	2 620*	1 590*	2 200*	1 330*
-4	2 180*	2 180*	2 600*	2 600*	3 350*	3 350*	3 760*	2 520*	3 090*	1 950*	2 610*	1 580*	2 190*	1 320*	
-5	2 560*	2 560*	3 020*	3 020*	3 820*	3 570*	3 610*	2 560*	3 000*	1 980*	2 540*	1 600*	2 180*	1 330*	
-6	2 970*	2 970*	3 490*	3 490*	4 150*	3 660*	3 400*	2 620*	2 840*	2 020*	2 410*	1 630*	2 070*	1 360*	
-7	3 410*	3 410*	4 030*	4 030*	3 730*	3 730*	3 080*	2 710*	2 590*	2 090*	2 200*	1 690*	1 870*	1 410*	
-8			3 900*	3 900*	3 170*	3 170*	2 650*	2 650*	2 230*	2 180*	1 870*	1 770*			
-9							2 020*	2 020*							

Conditions	Load point height m	At max. reach										
		height		10m		11m		12m		metre	Front	360°
		Front	360°	Front	360°	Front	360°	Front	360°			
Boom: 7.7 m Arm 5.3 m Counterweight: 3 300 kg Additional counterweight: 400 kg 500 mm shoe	11											
	10									8.5	970*	970*
	9	1 140*	1 140*							9.4	930*	930*
	8	1 190*	1 190*	990*	990*					10.1	920*	920*
	7	1 220*	1 220*	1 210*	1 210*					10.7	910*	910*
	6	1 270*	1 270*	1 240*	1 240*	1 050*	1 050*			11.2	920*	920*
	5	1 340*	1 340*	1 280*	1 250*	1 240*	1 030*			11.5	940*	930*
	4	1 420*	1 420*	1 340*	1 210*	1 280*	1 010*			11.8	970*	870*
	3	1 520*	1 400*	1 410*	1 170*	1 330*	980*			12	1 000*	820*
	2	1 620*	1 340*	1 490*	1 120*	1 380*	950*	1 130*	800*	12.1	1 050*	790*
	1	1 720*	1 280*	1 560*	1 080*	1 440*	920*	1 200*	780*	12.1	1 120*	770*
	0 (Ground)	1 810*	1 120*	1 630*	1 040*	1 460*	890*			12	1 200*	770*
	-1	1 880*	1 180*	1 660*	1 010*	1 440*	870*			11.8	1 300*	770*
	-2	1 890*	1 150*	1 630*	980*	1 430*	850*			11.6	1 330*	790*
	-3	1 870*	1 130*	1 620*	970*	1 420*	850*			11.2	1 390*	830*
-4	1 870*	1 120*	1 620*	970*					10.8	1 470*	880*	
-5	1 880*	1 140*	1 630*	990*					10.2	1 590*	970*	
-6	1 770*	1 170*							9.5	1 640*	1 100*	
-7									8.6	1 690*	1 300*	
-8									7.4	1 730*	1 650*	
-9									5.9	1 720*	1 720*	

EQUIPMENT

ENGINE	ZX130LCN
Aftertreatment device	●
Air cleaner double filters	●
Alternator 60 A	●
Auto idle system	●
Auto shut-down control	●
Belt auto tensioner	●
Cartridge-type engine oil filter	●
Cartridge-type fuel main filter	●
Cold fuel resistance valve	○
ConSite OIL (sensor)*	●
Dry-type air filter with evacuator valve (with air filter restriction indicator)	●
Dust-proof indoor net	●
ECO/PWR mode control	●
Electrical fuel feed pump	●
Engine oil drain coupler	●
Expansion tank	●
Fan guard	●
Fuel cooler	●
Fuel pre-filter with water separator	●
Isolation-mounted engine	●
Maintenance free pre-cleaner	○
Oil separator	●
Radiator, oil cooler and intercooler	●

HYDRAULIC SYSTEM	ZX130LCN
Auto power lift	●
ConSite OIL (sensor)*	●
Control valve with main relief valve	●
Extra port for control valve	●
High mesh full flow filter	●
Restriction indicator for full flow filter	○
Hose rupture valve for arm cylinder	●
Hose rupture valve for boom cylinder	●
Pilot filter	●
Power boost	●
Suction filter	●
Variable relief valve for breaker and crusher	●
Work mode selector	●

CAB	ZX130LCN
All-weather sound suppressed steel cab	●
Auto control air conditioner	●
AUX function lever (breaker assist)	○
Bluetooth® integrated DAB+radio	●
Console height adjustment	●
Control lever auto-lock	●
CRES VII (centre pillar reinforced structure) cab	●
Cab with P5A glass and roof wiper	○
Drink holder with hot and cool function	●
Electric double horn	●
Engine shut-off switch	●
Equipped with reinforced, tinted (green colour) glass windows	●
Evacuation hammer	●
Floor mat	●
Footrest	●
Front window washer (2 points)	●
Glove compartment	●
Hands-free calling device	●
Hot and cool box	●
Intermittent windshield wipers	●
Key cylinder light	●
Laminated round glass window	○
LED room light	●
Magazine rack	●
OPG front guard Level II (ISO 10262 : 1998) compliant	○
OPG top guard Level I (ISO 10262 : 1998) compliant	●
OPG top guard Level II (ISO 10262 : 1998) compliant	○
Pilot shut-off lever	●
Power outlet 12 V and 24 V	●
Push button low idle	●
Rain guard (without OPG front guard)	●
Rear tray	●
Retractable seat belt	●
ROPS (ISO 12117-2 : 2008) compliant cab	●
Rubber radio antenna	●
Seat : air suspension seat with heater	●
Seat adjustment part : backrest, armrest, height and angle, slide forward / back	●
Seat belt reminder	●
Short wrist control levers	●
Smartphone holder	●
Sunscreen roller type (multi-use front or side and rear window)	○
Transparent roof with slide curtain	●
5V USB power supply	●
Wide view wiper	●
Windows on front, upper, lower and left side can be opened	●
2 speakers	●
4 fluid-filled elastic mounts	●
8 inch monitor	●

* Engine oil and hydraulic oil monitoring sensor.

● : Standard equipment ○ : Optional equipment — : Not applicable

MONITOR SYSTEM	ZX130LCN
Alarms : overheat, engine warning, engine oil pressure, alternator, minimum fuel level, hydraulic filter restriction, air filter restriction, work mode, overload, etc	●
Alarm buzzers : overheat, engine oil pressure, overload, etc	●
Display of metres : water temperature, hour, fuel rate, clock, etc	●
Other displays : work mode, auto-idle, glow, rearview monitor, operating conditions, etc	●
35 languages selection	●

LIGHTS	ZX130LCN
Additional boom LED light with cover	○
Additional cab roof front LED lights	○
Additional cab roof rear LED light	○
LED lights for camera (side and rear view camera)	○
Rotating lamp	○
2 working LED lights	●

UPPER STRUCTURE	ZX130LCN
Aerial Angle® (270-degree view camera system)	●
Batteries 2 x 74 Ah	●
Battery disconnect switch	●
Cab top handhold	●
Body top handrail	●
Counterweight 3 300 kg	●
Additional counterweight 400 kg	●
Electric fuel refilling pump with auto stop and filter	●
Fuel level float	●
Hydraulic oil level gauge	●
Lockable fuel refilling cap	●
Lockable machine covers	●
Lockable tool box	●
Platform handrail	●
Side view mirror (right and left)	●
Skid-resistant plates	●
Swing parking brake	●
Undercover	●

UNDERCARRIAGE	ZX130LCN
Bolt-on sprocket	●
Greasing type track adjuster	●
Reinforced track links with pin seals	●
Shoe : 500 mm triple grouser	●
Shoe : 600, 700 mm triple grouser	○
Towing hole for light weight object	●
Track undercover	●
Travel direction mark on track frame	●
Travel motor covers	●
Travel parking brake	●
Upper and lower rollers	●
1 track guard (each side)	●
2 track guards (each side)	○
4 tie down brackets	●

FRONT ATTACHMENTS	ZX130LCN
Casted bucket link A	●
Centralised lubrication system	●
Dirt seal on all bucket pins	●
Flanged pin	●
HN bushing	●
Reinforced resin thrust plate	●
STD bucket Link B	●
WC (tungsten-carbide) thermal spraying	●

ATTACHMENTS	ZX130LCN
Accessories for 2 speed selector	○
Additional pump or PTO valve	○
Assist piping long/short	●
Extra piping long/short	●
Pilot accumulator	●

MISCELLANEOUS	ZX130LCN
ConSite	○
Global e-Service	●
Onboard information controller	●
Standard tool kit	●

SPECIFICATIONS

ZX210LC TYPE HE15LD SUPER LONG FRONT

ENGINE

Model	Isuzu 4HK1
Type	4-cycle water-cooled, common rail direct injection
Aspiration	Variable geometry turbocharged, intercooled, cooled EGR
Aftertreatment	DOC+CSF+SCR system
No. of cylinders	4
Rated power	
ISO 14396	128.4 kW at 2 000 min ⁻¹ (rpm)
ISO 9249 : 2007	122 kW at 2 000 min ⁻¹ (rpm)
Maximum torque	670 Nm at 1 600 min ⁻¹ (rpm)
Piston displacement	5.193 L
Bore and stroke	115 mm x 125 mm
Batteries	2 x 12 V / 126 Ah

HYDRAULIC SYSTEM

Hydraulic Pumps

Main pumps	3 variable displacement axial piston pump
Maximum oil flow	2 x 212 L/min
.....	1 x 184 L/min
Pilot pump	1 gear pump
Maximum oil flow	33.7 L/min

Hydraulic Motors

Travel	2 variable displacement axial piston motors
Swing	1 axial piston motor

Relief Valve Settings

Implement circuit	34.3 MPa
Swing circuit	27.8 MPa
Travel circuit	34.3 MPa
Pilot circuit	3.9 MPa
Power boost	38.0 MPa

Hydraulic Cylinders

	Quantity	Bore	Rod diameter
Boom	2	120 mm	85 mm
Arm	1	150 mm	105 mm
Bucket	1	100 mm	70 mm

UPPER STRUCTURE

Revolving Frame

D-section frame for resistance to deformation.

Swing Device

Axial piston motor with planetary reduction gear is bathed in oil. Swing circle is single-row. Swing parking brake is spring-set/hydraulic-released disc type.

Swing speed	9.2 min ⁻¹ (rpm)
Swing torque	58 kNm

Operator's Cab

Independent spacious cab, conforming to ISO* Standards.

* International Organization for Standardization

UNDERCARRIAGE

Tracks

Tractor-type undercarriage. Welded track frame using selected materials. Side frame welded to track frame. Lubricated track rollers, idlers, and sprockets with floating seals.

Track shoes with triple grousers made of induction-hardened rolled alloy. Heat-treated connecting pins with dirt seals. Hydraulic (grease) track adjusters with shock-absorbing recoil springs.

Numbers of Rollers and Shoes on Each Side

Upper rollers	2
Lower rollers	8
Track shoes	49
Track guard	2

Travel Device

Each track driven by 2-speed axial piston motor.

Parking brake is spring-set/hydraulic-released disc type.

Automatic transmission system : High-Low.

Travel speeds	High: 0 to 5.3 km/h
.....	Low: 0 to 3.3 km/h

Maximum traction force ... 203 kN

Gradeability

58% (30 degree) continuous

ENVIRONMENT

Sound level in cab according to ISO 6396 : 2008 Lpa 70 dB(A)

External sound level according to ISO 6395 : 2008 and

EU Directive 2000/14/EC LwA 101 dB(A)
/ LwA 102 dB(A)

SERVICE REFILL CAPACITIES

Fuel tank	400.0 L
Engine coolant	28.0 L
Engine oil	23.0 L
Swing device	6.9 L
Travel device (each side)	6.8 L
Hydraulic system	240.0 L
Hydraulic oil tank	135.0 L
DEF/AdBlue® tank	57.0 L

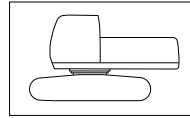
WEIGHTS AND GROUND PRESSURE

ZX210LC TYPE HE15LD SUPER LONG FRONT:

Equipped with 8.64 m monoblock boom, 5.85 m arm and 0.40 m³ bucket (SAE, PCSA heaped), 6 100 kg counterweight.

Shoe type	Shoe width	Operating weight	Ground pressure
Triple grouser	600 mm	24 600 kg	51 kPa (0.52 kgf/cm ²)
	700 mm	24 900 kg	44 kPa (0.45 kgf/cm ²)
	800 mm	25 200 kg	39 kPa (0.40 kgf/cm ²)
	900 mm	25 500 kg	35 kPa (0.36 kgf/cm ²)

Basic Machine Weight and Overall width



Excluding front end attachment, fuel, hydraulic oil and coolant etc. Including counterweight.

ZX210LC

Shoe width	Weight	Overall width
600 mm	20 100 kg	2 990 mm
600 mm	20 400 kg	3 090 mm
800 mm	20 700 kg	3 190 mm
900 mm	21 000 kg	3 290 mm

BUCKET SPECIFICATIONS AND COMPATIBILITY

ZX210LC

	Capacity ISO heaped	Width Without side cutters	Weight	Recommendation
				ZX210LC
				HE13
Bucket radius 1 060 mm	0.13 m ³	360 mm	140 kg	⊙
	0.17 m ³	450 mm	170 kg	⊙
	0.19 m ³	490 mm	180 kg	⊙
	0.23 m ³	560 mm	190 kg	⊙
	0.28 m ³	660 mm	210 kg	⊙
	0.33 m ³	770 mm	230 kg	⊙
Bucket radius 1 230 mm	0.40 m ³	720 mm	360 kg	⊙
	0.45 m ³	800 mm	390 kg	○
	0.50 m ³	890 mm	410 kg	□
	0.59 m ³	950 mm	430 kg	□
	0.66 m ³	1 030 mm	430 kg	□
Slope finishing	-	1 500 mm	250 kg	X
	-	1 600 mm	430 kg	◇
Max. weight				1 170 kg

⊙ Suitable for materials with density of 1 800 kg/m³ or less

○ Suitable for materials with density of 1 600 kg/m³ or less

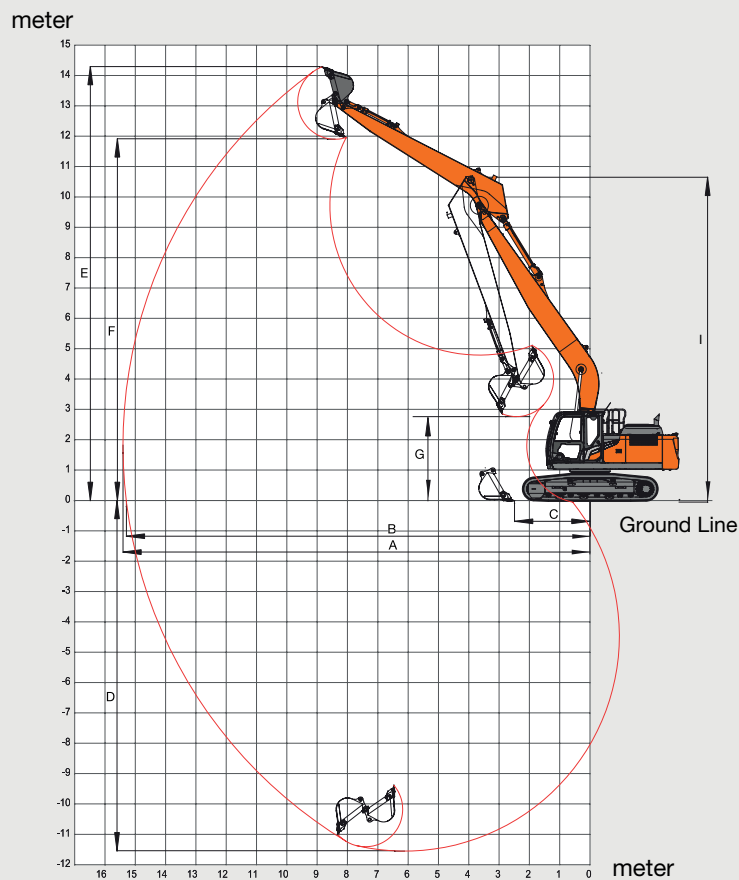
□ Suitable for materials with density of 1 100 kg/m³ or less

◇ Slope-finishing service

SPECIFICATIONS

ZX210LC TYPE HE15LD SUPER LONG FRONT

WORKING RANGES

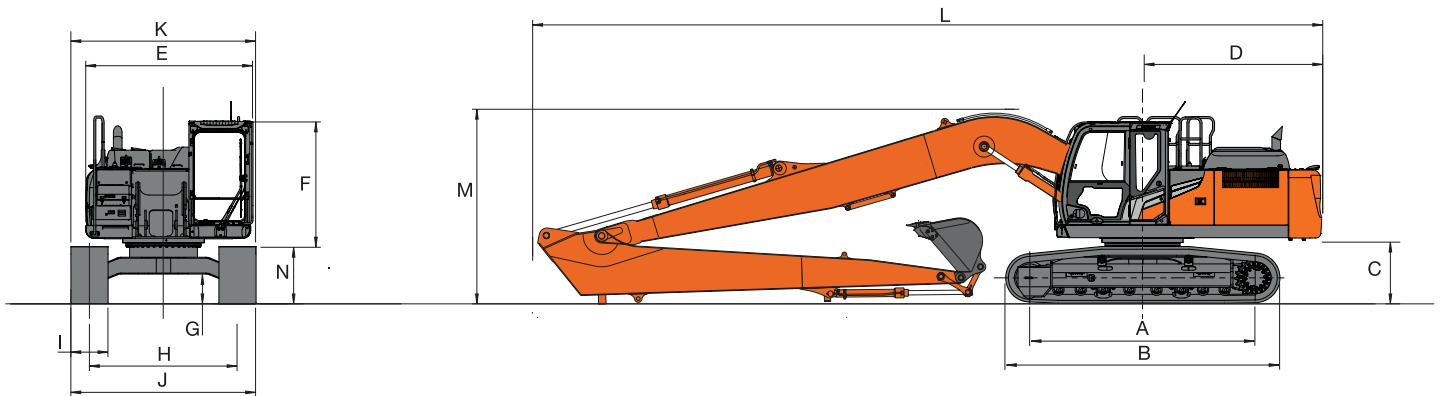


Unit: mm

	ZX210LC TYPE HE15LD
A Max. digging reach	15 400
B Max. digging reach (on ground)	15 290
C Min. level crowding distance	2 480
D Max. digging depth	11 540
E Max. cutting height	14 290
F Max. dumping height	11 910
G Min. dumping height	2 650
H Min. swing radius	4 710
I Min. swing radius height	10 700
Bucket digging force ISO	81 kN
Arm crowd force ISO	51 kN

- Excluding track shoe lug

DIMENSIONS



Unit: mm

	ZX210LC TYPE HE15LD
A Distance between tumbler	3 660
B Undercarriage length	4 450
* C Counterweight clearance	990
D Rear-end swing radius	2 910
E Overall width of upper structure	2 700
F Overall height of cab	2 950
*G Min. ground clearance	450
H Track gauge	2 390
I Track shoe width	G 600 / G 700 / G 800 / G 900
J Undercarriage width	2 990 / 3 090 / 3 190 / 3 290
K Overall width	2 990 / 3 090 / 3 190 / 3 290
L Overall length	12 810
M Overall height of boom	3 150
N Track height with triple grouser shoes	900

* Excluding track shoe lug G: Triple grouser shoe

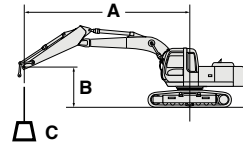
LIFTING CAPACITIES

Metric measure

Notes: 1. Ratings are based on ISO 10567.

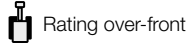
- Lifting capacity of the ZAXIS series does not exceed 75% of tipping load with the machine on firm, level ground or 87% full hydraulic capacity.
- The load point is the center-line of the bucket pivot mounting pin on the arm.
- * Indicates load limited by hydraulic capacity.
- 0m = Ground.

For lifting capacities, subtract bucket and quick hitch weight from lifting capacities.



- A: Load radius
- B: Load point height
- C: Lifting capacity

ZX210LC HE15LD SUPER LONG FRONT



Rating over-front



Rating over-side or 360 degrees

Unit: kg

Conditions	Load point height m	Load radius															
		3m		4.5m		6m		7.5m		9m		10.5m		12m			
Boom 8.64 m Arm 5.85 m Counterweight 6 100 kg	13.5																
	12																
	10.5											1 690*	1 690*	1 670*	1 670*		
	9											1 650*	1 650*	1 660*	1 660*		
	7.5											1 700*	1 700*	1 710*	1 710*		
	6											1 800*	1 800*	1 800*	1 800*		
	4.5											1 930*	1 930*	1 800*	1 800*		
	3											2 150*	2 150*	1 940*	1 940*		
	1.5			5 050*	5 050*	3 800*	3 800*	2 460*	2 460*	2 850*	2 850*	2 400*	2 400*	2 110*	2 110*	2 020*	1 760*
	0 (Ground)	1 330*	1 330*	3 840*	3 840*	4 240*	4 240*	3 240*	3 240*	2 660*	2 660*	2 280*	2 280*	2 190*	2 120*	1 690*	
	-1.5	2 260*	2 260*	4 160*	4 160*	5 000*	4 280*	3 810*	3 180*	3 060*	2 490*	2 560*	2 000*	2 000*	2 220*	1 620*	
	-3	3 270*	3 270*	5 000*	5 000*	5 090*	4 210*	3 920*	3 100*	3 150*	2 420*	2 620*	1 960*	1 960*	2 150*	1 640*	
	-4.5	4 380*	4 380*	6 180*	6 180*	5 000*	4 230*	3 900*	3 100*	3 150*	2 410*	2 600*	1 950*	1 950*			
	-6	5 660*	5 660*	6 230*	6 230*	4 740*	4 330*	3 740*	3 160*	3 020*	2 460*	2 450*	2 000*	2 000*			
-7.5	7 200*	7 200*	5 490*	5 490*	4 250*	4 250*	3 370*	3 280*	2 690*	2 570*	2 040*	2 040*					
-9	5 800*	5 800*	4 370*	4 370*	3 430*	3 430*	2 680*	2 680*	1 930*	1 930*							

Conditions	Load point height m	13.5		At max. reach		
						metre
		Boom 8.64 m Arm 5.85 m Counterweight 6 100 kg	13.5			1 760*
12				1 600*	1 600*	11.1
10.5				1 530*	1 530*	12.1
9				1 480*	1 480*	12.9
7.5				1 490*	1 490*	13.5
6	1 560*		1 520*	1 500*	1 400*	13.9
4.5	1 710*		1 460*	1 540*	1 330*	14.1
3	1 830*		1 420*	1 600*	1 300*	14.1
1.5	1 880*		1 390*	1 720*	1 300*	14.0
0 (Ground)	1 900*		1 370*	1 850*	1 330*	13.7
-1.5				1 900*	1 410*	13.3
-3				1 950*	1 540*	12.6
-4.5				1 980*	1 750*	11.7
-6				1 990*	1 990*	10.6
-7.5			1 910*	1 910*	9.0	

EQUIPMENT

ENGINE	ZX210LC
Aftertreatment device	●
Air cleaner double filters	●
Alternator 60 A	●
Auto idle system	●
Auto shut-down control	●
Cartridge-type engine oil filter	●
Cartridge-type fuel main filter	●
Cold fuel resistance valve	●
ConSite OIL (sensor)*	●
DEF/AdBlue® tank inlet strainer and extension filler	●
DEF/AdBlue® tank	●
Dry-type air filter with evacuator valve (with air filter restriction indicator)	●
Dust-proof indoor net	●
ECO/PWR mode control	●
Electrical fuel feed pump	●
Engine oil drain coupler	●
Expansion tank	●
Fan guard	●
Fuel cooler	●
Fuel pre-filter with water separator	●
Isolation-mounted engine	●
Maintenance free pre-cleaner	○
Radiator, oil cooler and intercooler	●

HYDRAULIC SYSTEM	ZX210LC
Auto power lift	●
ConSite OIL (sensor)*	●
Control valve with main relief valve	●
High mesh full flow filter	●
Hose rupture valve for arm cylinder	●
Hose rupture valve for boom cylinder	●
Pilot filter	●
Power boost	●
Restriction indicator for full flow filter	○
Suction filter	●
Swing dampener valve	●
Two extra ports for control valve	●
Variable relief valve for breaker and crusher	●
Work mode selector	●

CAB	ZX210LC
All-weather sound suppressed steel cab	●
Auto control air conditioner	●
AUX function lever (breaker assist)	○
Bluetooth® integrated DAB+radio	●
Console height adjustment	●
Control lever auto-lock	●
CRES VII (centre pillar reinforced structure) cab	●
Cab with P5A glass and roof wiper	○
Drink holder with hot and cool function	●
Electric double horn	●
Engine shut-off switch	●
Equipped with reinforced, tinted (green colour) glass windows	●
Evacuation hammer	●
Floor mat	●
Footrest	●
Front window washer (2 points)	●
Glove compartment	●
Hands-free calling device	●
Hot and cool box	●
Intermittent windshield wipers	●
Key cylinder light	●
Laminated round glass window	○
LED room light	●
Magazine rack	●
OPG front guard Level II (ISO 10262 : 1998) compliant	○
OPG top guard Level I (ISO 10262 : 1998) compliant	●
OPG top guard Level II (ISO 10262 : 1998) compliant	○
Pilot shut-off lever	●
Power outlet 12 V and 24 V	●
Push button low idle	●
Rain guard (without OPG front guard)	●
Rear tray	●
Retractable seat belt	●
ROPS (ISO 12117-2 : 2008) compliant cab	●
Rubber radio antenna	●
Seat : air suspension seat with heater	●
Seat adjustment part : backrest, armrest, height and angle, slide forward / back	●
Seat belt reminder	●
Short wrist control levers	●
Sunscreen roller type (multi-use front or side and rear window)	○
Smartphone holder	●
Transparent roof with slide curtain	●
5V USB power supply	●
Wide view wiper	●
Windows on front, upper, lower and left side can be opened	●
2 speakers	●
4 fluid-filled elastic mounts	●
8 inch monitor	●

* Engine oil and hydraulic oil monitoring sensor.

EQUIPMENT

MONITOR SYSTEM	ZX210LC
Alarms : overheat, engine warning, engine oil pressure, alternator, minimum fuel level, hydraulic filter restriction, air filter restriction, work mode, overload, SCR system trouble, etc	●
Alarm buzzers : overheat, engine oil pressure, overload, SCR system trouble, etc etc	●
Display of metres : water temperature, hour, fuel rate, clock, DEF/AdBlue® rate, etc	●
Other displays : work mode, auto-idle, glow, rearview monitor, operating conditions, etc	●
35 languages selection	●

LIGHTS	ZX210LC
Additional boom LED light with cover	○
Additional cab roof front LED lights	○
Additional cab roof rear LED light	○
LED lights for camera (side and rear view camera)	○
Rotating lamp	○
2 working LED lights	●

UPPER STRUCTURE	ZX210LC
Aerial Angle® (270-degree view camera system)	●
Batteries 2 x 126 Ah	●
Battery disconnect switch	●
Body top guardrail	-
Body top handrail	●
Counterweight 6 100 kg	●
Electric fuel refilling pump with auto stop and filter	●
Fuel level float	●
Hydraulic oil level gauge	●
Lockable fuel refilling cap	●
Lockable machine covers	●
Lockable tool box	●
Platform handrail	●
Side view mirror (right and left)	●
Skid-resistant plates	●
Swing parking brake	●
Undercover	●
Utility space	●

● : Standard equipment ○ : Optional equipment - : Not applicable

UNDERCARRIAGE	ZX210LC
Bolt-on sprocket	●
Greasing type track adjuster	●
Lockable tool box	-
Reinforced track links with pin seals	●
Shoe : 600 mm triple grouser	●
Shoe : 700, 800, 900 mm triple grouser	○
Towing hole for light weight object	●
Track undercover	●
Travel direction mark on track frame	●
Travel motor covers	●
Travel parking brake	●
Upper and lower rollers	●
2 track guards (each side)	●
3 track guards (each side)	○
4 tie down brackets	●

FRONT ATTACHMENTS	ZX210LC
Casted bucket link A	●
Centralised lubrication system	●
Dirt seal on all bucket pins	●
Flanged pin	●
HN bushing	●
Reinforced resin thrust plate	●
WC (tungsten-carbide) thermal spraying	●
Welded bucket link A	○
B-link (Heavy duty type)	○

ATTACHMENTS	ZX210LC
Accessories for 2 speed selector	○
Additional pump	○
Assist piping	○
Breaker and crusher piping	-
Pilot accumulator	●

MISCELLANEOUS	ZX210LC
ConSite	○
Global e-Service	●
Onboard information controller	●
Standard tool kit	●

SPECIFICATIONS

ZX250LC / ZX250LCN SUPER LONG FRONT

ENGINE

Model	Isuzu 4HK1
Type	4-cycle water-cooled, common rail direct injection
Aspiration	Variable geometry turbocharged, intercooled, cooled EGR
Aftertreatment	DOC+CSF+SCR system
No. of cylinders	4
Rated power	
ISO 14396	140 kW at 2 000 min ⁻¹ (rpm)
ISO 9249 : 2007	132 kW at 2 000 min ⁻¹ (rpm)
SAE J1349, net.....	132 kW at 2 000 min ⁻¹ (rpm)
Maximum torque	676 Nm at 1 800 min ⁻¹ (rpm)
Piston displacement	5.193 L
Bore and stroke.....	115 mm x 125 mm
Batteries.....	2 x 12 V / 120 Ah

HYDRAULIC SYSTEM

Hydraulic Pumps

Main pumps	3 variable displacement axial piston pump
Maximum oil flow	2 x 224 L/min
.....	1 x 194 L/min
Pilot pump.....	1 gear pump
Maximum oil flow	35.5 L/min

Hydraulic Motors

Travel	2 variable displacement axial piston motors
Swing	1axial piston motor

Relief Valve Settings

Implement circuit	34.3 MPa
Swing circuit	32.4 MPa
Travel circuit	34.3 MPa
Pilot circuit	3.9 MPa
Power boost	38.0 MPa

ZX250LC / ZX250LCN TYPE HE15LD & HE18LD SUPER LONG FRONT

	Quantity	Bore	Rod diameter
Boom	2	125 mm	90 mm
Arm	1	150 mm	105 mm
Bucket	1	105 mm	75 mm

UPPER STRUCTURE

Revolving Frame

D-section frame for resistance to deformation.

Swing Device

Axial piston motor with planetary reduction gear is bathed in oil. Swing circle is single-row. Swing parking brake is spring-set/hydraulic-released disc type.

Swing speed.....	7.2 min ⁻¹ (rpm)
Swing torque	61.0 kNm (6 220 kgfm)

UNDERCARRIAGE

Tracks

Heat-treated connecting pins with dirt seals. Hydraulic (grease) track adjusters with shock-absorbing recoil springs.

Numbers of Rollers and Shoes on Each Side

ZX250LC / ZX250LCN

Upper rollers.....	2
Lower rollers.....	9
Track shoes.....	51
Track guards	3

Travel Device

Each track driven by 2-speed axial piston motor. Parking brake is spring-set/hydraulic-released disc type. Automatic transmission system : High-Low.

Travel speeds	High : 0 to 5.5 km/h
	Low : 0 to 3.4 km/h

Maximum traction force ... 215 kN

Gradeability

70% (35 degree) continuous

SOUND LEVEL

Sound level in cab according to ISO 6396 Lpa 67 dB(A)

External sound level according to ISO 6395 and
EU Directive 2000/14/EC LwA 101 dB(A)

SERVICE REFILL CAPACITIES

ZX250LC / ZX250LCN

Fuel tank	510.0 L
Engine coolant	31.0 L
Engine oil	29.0 L
Swing device	9.3 L
Travel device (each side).....	7.8 L
Hydraulic system	294.0 L
Hydraulic oil tank.....	156.0 L
DEF/AdBlue® tank.....	70.0 L

WEIGHTS AND GROUND PRESSURE

ZX250LC TYPE HE15LD SUPER LONG FRONT:

Equipped with 8.50 m monoblock boom, 5.93 m arm and 0.66 m³ bucket (SAE, PCSA heaped), 7 750 kg counterweight.

Shoe type	Shoe width	Operating weight	Ground pressure
Triple grouser	600 mm	28 700 kg	57 kPa (0.58 kgf/cm ²)
	700 mm	29 100 kg	50 kPa (0.51 kgf/cm ²)
	800 mm	29 400 kg	44 kPa (0.45 kgf/cm ²)
	900 mm	29 900 kg	40 kPa (0.41 kgf/cm ²)

ZX250LCN TYPE HE15LD SUPER LONG FRONT:

Equipped with 8.50 m monoblock boom, 5.93 m arm and 0.66 m³ bucket (SAE, PCSA heaped), 7 750 kg counterweight.

Shoe type	Shoe width	Operating weight	Ground pressure
Triple grouser	600 mm	28 700 kg	57 kPa (0.58 kgf/cm ²)
	700 mm	29 000 kg	50 kPa (0.51 kgf/cm ²)
	800 mm	29 300 kg	44 kPa (0.45 kgf/cm ²)
	900 mm	29 800 kg	40 kPa (0.41 kgf/cm ²)

ZX250LC TYPE HE18LD SUPER LONG FRONT:

Equipped with 10.23 m monoblock boom, 7.28 m arm and 0.4 m³ bucket (SAE, PCSA heaped), 7 750 kg counterweight.

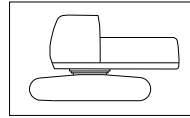
Shoe type	Shoe width	Operating weight	Ground pressure
Triple grouser	600 mm	28 900 kg	58 kPa (0.59 kgf/cm ²)
	700 mm	29 200 kg	50 kPa (0.51 kgf/cm ²)
	800 mm	29 500 kg	44 kPa (0.45 kgf/cm ²)
	900 mm	30 000 kg	40 kPa (0.41 kgf/cm ²)

ZX250LCN TYPE HE18LD SUPER LONG FRONT:

Equipped with 10.23 m monoblock boom, 7.28 m arm and 0.4 m³ bucket (SAE, PCSA heaped), 7 750 kg counterweight.

Shoe type	Shoe width	Operating weight	Ground pressure
Triple grouser	600 mm	28 800 kg	58 kPa (0.59 kgf/cm ²)
	700 mm	29 100 kg	50 kPa (0.51 kgf/cm ²)
	800 mm	29 400 kg	44 kPa (0.45 kgf/cm ²)
	900 mm	29 900 kg	40 kPa (0.41 kgf/cm ²)

Basic Machine Weight and Overall width



Excluding front end attachment, additional counterweight, fuel, hydraulic oil and coolant etc. Including counterweight.

ZX250LC

Shoe width	Weight	Overall width
600 mm	23 400 kg	3 190 mm
700 mm	23 700 kg	3 290 mm
800 mm	24 000 kg	3 390 mm
900 mm	24 500 kg	3 490 mm

ZX250LCN

Shoe width	Weight	Overall width
600 mm	23 300 kg	2 990 mm
700 mm	23 600 kg	3 090 mm
800 mm	23 900 kg	3 190 mm
900 mm	24 400 kg	3 290 mm

BUCKET SPECIFICATIONS AND COMPATIBILITY

ZX250LC / ZX250LCN

	Capacity ISO heaped	Width Without side cutters	Weight	Recommendation			
				ZX250LC		ZX250LCN	
				HE15LD	HE18LD	HE15LD	HE18LD
Bucket radius 1 230 mm	0.40 m ³	720 mm	340 kg	⊙	○	⊙	□
	0.45 m ³	800 mm	370 kg	⊙	□	⊙	□
	0.50 m ³	890 mm	390 kg	⊙	□	⊙	-
	0.59 m ³	950 mm	410 kg	⊙	-	⊙	-
	0.66 m ³	1 030 mm	430 kg	⊙	-	○	-
Slope finishing	-	1 600 mm	430 kg	◇	◇	◇	◇
Max. weight				1 690 kg	1 050 kg	1 560 kg	940 kg

⊙ Suitable for materials with density of 1 800 kg/m³ or less

○ Suitable for materials with density of 1 600 kg/m³ or less

□ Suitable for materials with density of 1 100 kg/m³ or less

◇ Slope-finishing service

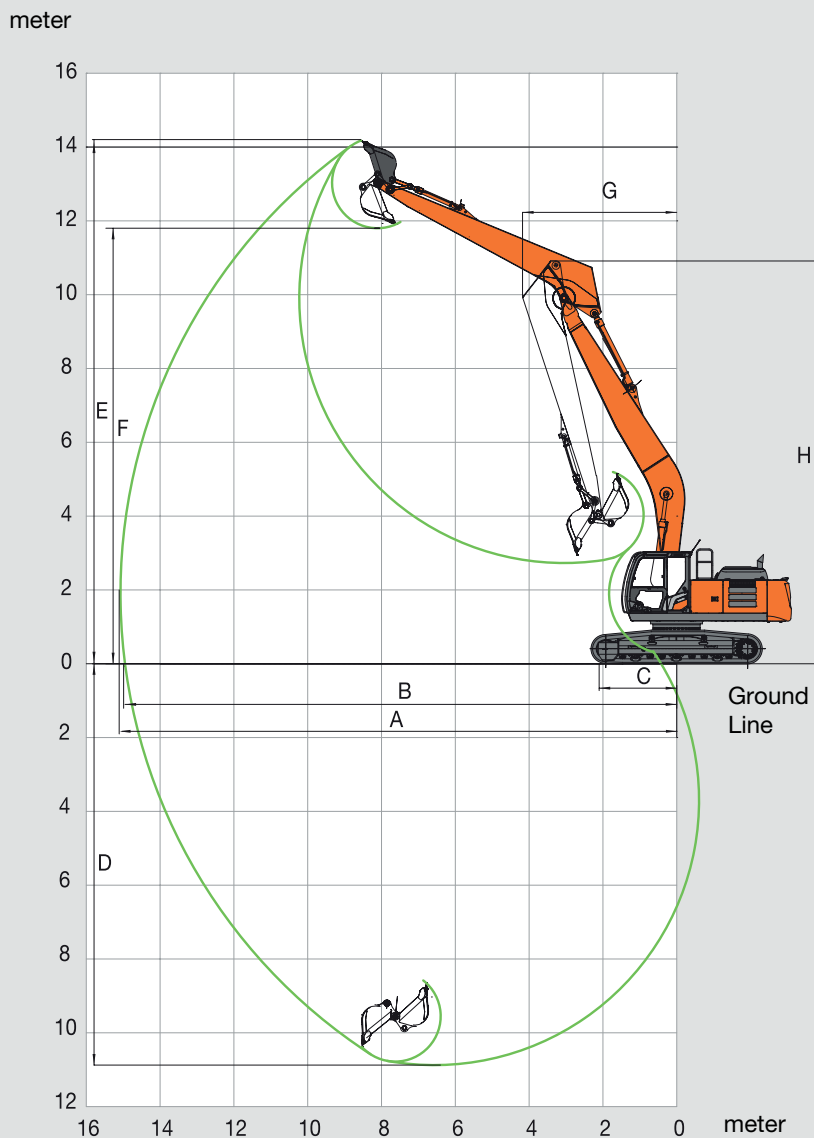
- Not applicable

• Use the bucket in the range where the total weight of bucket and loading material does not exceed maximum weight described above.

SPECIFICATIONS

ZX250LC / ZX250LCN

WORKING RANGES



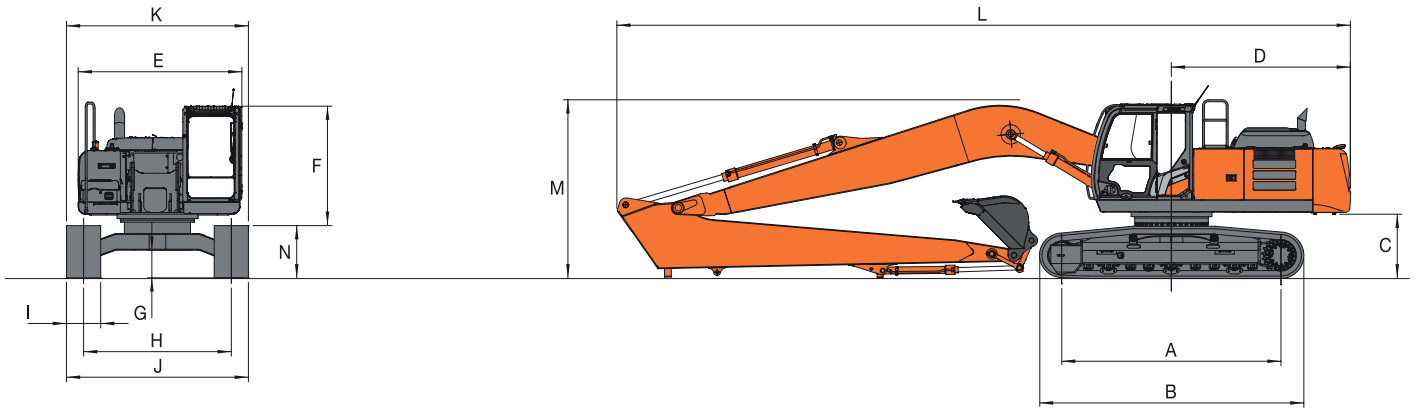
Unit: mm

	ZX250LC / ZX250LCN TYPE HE15LD
A Max. digging reach	15 070
B Max. digging reach (on ground)	14 950
C Max. level crowding distance	2 110
D Max. digging depth	10 870
E Max. cutting height	14 180
F Max. dumping height	11 800
G Min. swing radius	4 180
H Min. swing radius height	10 920
Bucket digging force ISO	78 kN (7 960 kgf)
Arm crowd force ISO	69 kN (7 040 kgf)

• Excluding track shoe lug

Note: Working range can be changed, depending on bucket size.

DIMENSIONS

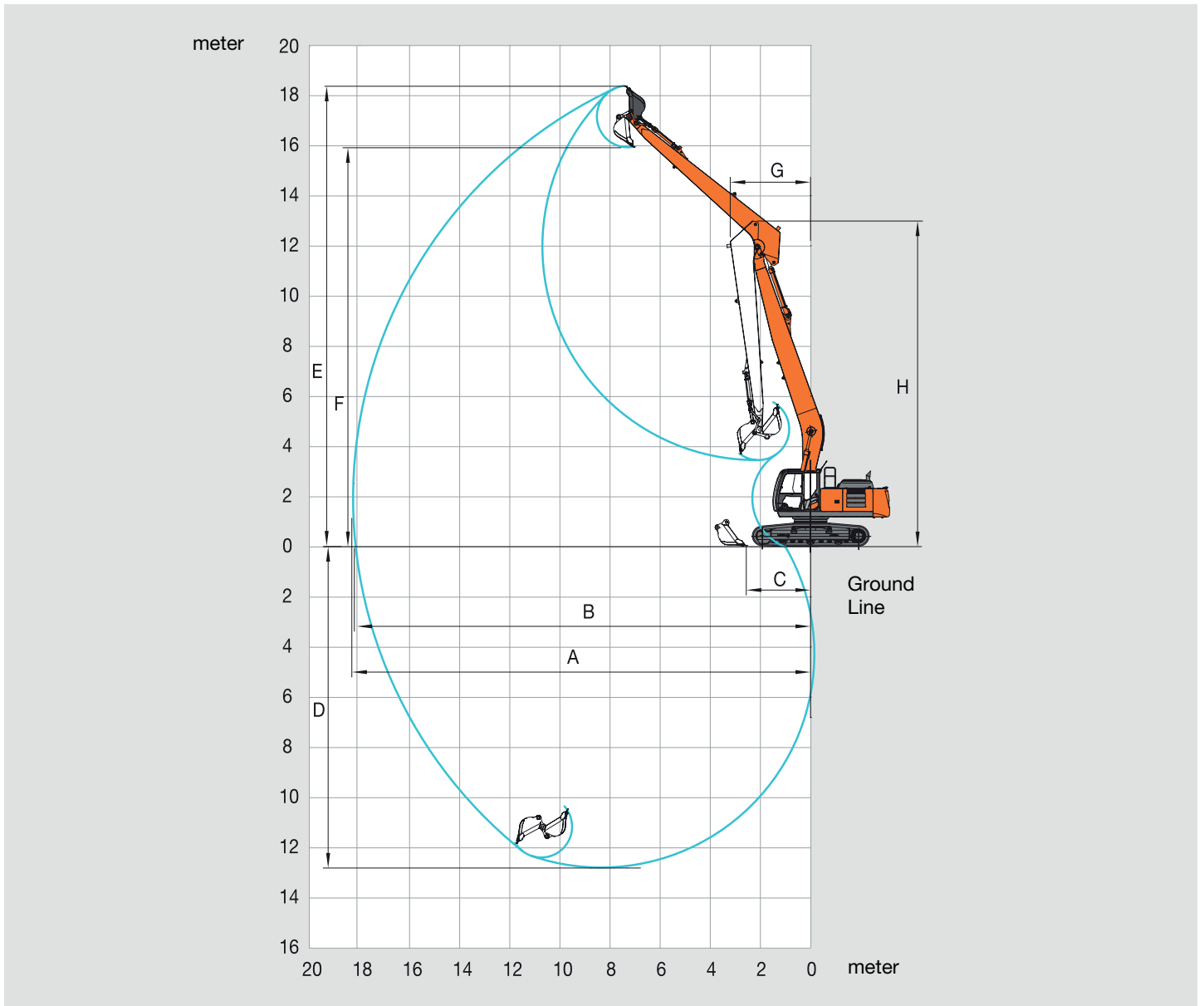


Unit: mm

	ZX250LC TYPE HE15LD	ZX250LCN TYPE HE15LD
A Distance between tumblers	3 850	3 850
B Undercarriage length	4 640	4 640
* C Counterweight clearance	1 050	1 050
D Rear-end swing radius	3 140	3 140
E Overall width of upper structure	2 870	2 870
F Overall height of cab	3 010	3 010
* G Min. ground clearance	460	460
H Track gauge	2 590	2 390
I Track shoe width	600 / 700 / 800 / 900	600 / 700 / 800 / 900
J Undercarriage width	3 190 / 3 290 / 3 390 / 3 490	2 990 / 3 090 / 3 190 / 3 290
K Overall width	3 190 / 3 290 / 3 390 / 3 490	2 990 / 3 090 / 3 190 / 3 290
L Overall length	12 870	12 870
M Overall height of boom	3 140	3 140
N Track height with triple grouser shoes	920	920

* Excluding track shoe lug

WORKING RANGES



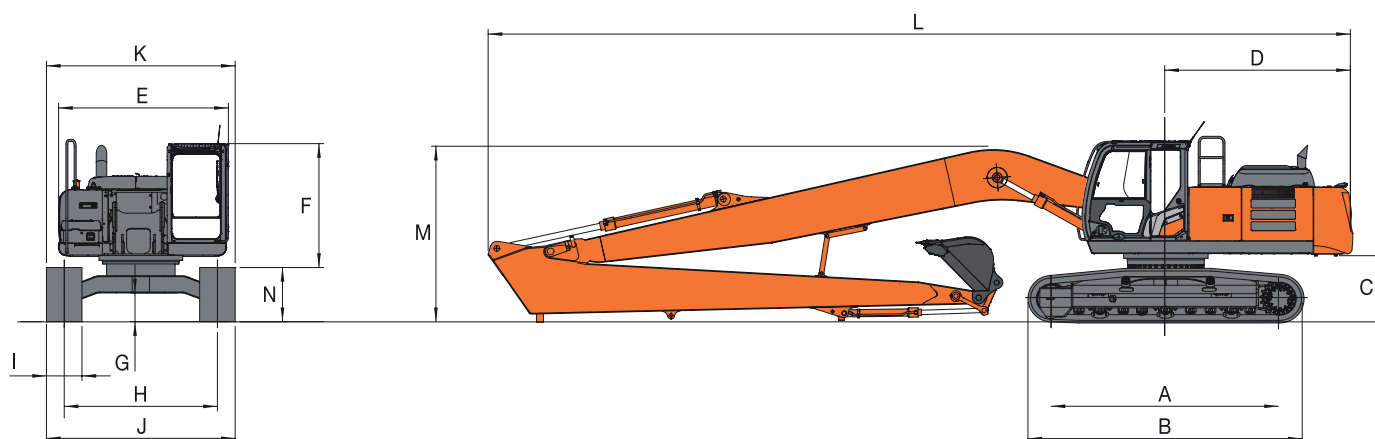
Unit: mm

	ZX250LC / ZX250LCN TYPE HE18LD
A Max. digging reach	18 200
B Max. digging reach (on ground)	18 100
C Max. level crowding distance	2 560
D Max. digging depth	12 760
E Max. cutting height	18 360
F Max. dumping height	15 910
G Min. swing radius	3 210
H Min. swing radius height	12 990
Bucket digging force ISO	74 kN (7 550 kgf)
Arm crowd force ISO	49 kN (5 000 kgf)

• Excluding track shoe lug

Note: Working range can be changed, depending on bucket size.

DIMENSIONS



Unit: mm

	ZX250LC TYPE HE18LD	ZX250LCN TYPE HE18LD
A Distance between tumbler	3 850	3 850
B Undercarriage length	4 640	4 640
* C Counterweight clearance	1 050	1 050
D Rear-end swing radius	3 140	3 140
E Overall width of upper structure	2 870	2 870
F Overall height of cab	3 010	3 010
* G Min. ground clearance	460	460
H Track gauge	2 590	2 390
I Track shoe width	600 / 700 / 800 / 900	600 / 700 / 800 / 900
J Undercarriage width	3 190 / 3 290 / 3 390 / 3 490	2 990 / 3 090 / 3 190 / 3 290
K Overall width	3 190 / 3 290 / 3 390 / 3 490	2 990 / 3 090 / 3 190 / 3 290
L Overall length	14 580	14 580
M Overall height of boom	3 030	3 030
N Track height with triple grouser shoes	920	920

* Excluding track shoe lug

LIFTING CAPACITIES

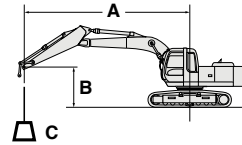
ZX250LC / ZX250LCN

Metric measure

Notes: 1. Ratings are based on ISO 10567.

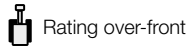
- Lifting capacity of the ZAXIS series does not exceed 75% of tipping load with the machine on firm, level ground or 87% full hydraulic capacity.
- The load point is the center-line of the bucket pivot mounting pin on the arm.
- * Indicates load limited by hydraulic capacity.
- 0m = Ground.

For lifting capacities, subtract bucket and quick hitch weight from lifting capacities.



- A: Load radius
- B: Load point height
- C: Lifting capacity

ZX250LC TYPE HE15LD SUPER LONG FRONT



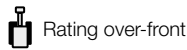
Rating over-side or 360 degrees

Unit: kg

Conditions	Load point height m	Load radius									
		3m		4.5m		6m		7.5m		9m	
		Rating over-front	Rating over-side or 360 degrees	Rating over-front	Rating over-side or 360 degrees	Rating over-front	Rating over-side or 360 degrees	Rating over-front	Rating over-side or 360 degrees	Rating over-front	Rating over-side or 360 degrees
Boom 8.50 m	12									2 230*	2 230*
Arm 5.93 m	10.5									2 110*	2 110*
Counterweight	9									2 120*	2 120*
7 750 kg	7.5									2 230*	2 230*
600 mm grouser shoe	6									2 410*	2 410*
	4.5					3 680*	3 680*	3 060*	3 060*	2 660*	2 660*
	3	4 290*	4 290*	6 180*	6 180*	4 430*	4 430*	3 500*	3 500*	2 940*	2 940*
	1.5			7 440*	7 440*	5 140*	5 140*	3 940*	3 940*	3 220*	3 220*
0 (Ground)	0	2 320*	2 320*	5 900*	5 900*	5 660*	5 660*	4 290*	4 290*	3 460*	3 460*
	-1.5	3 430*	3 430*	6 140*	6 140*	5 940*	5 940*	4 520*	4 420*	3 630*	3 450*
	-3	4 700*	4 700*	7 150*	7 150*	5 980*	5 980*	4 610*	4 320*	3 700*	3 370*
	-4.5	6 120*	6 120*	7 760*	7 760*	5 810*	5 810*	4 530*	4 310*	3 650*	3 360*
	-6	7 780*	7 780*	7 070*	7 070*	5 400*	5 400*	4 260*	4 260*	3 420*	3 410*
	-7.5	8 140*	8 140*	6 020*	6 020*	4 690*	4 690*	3 710*	3 710*	2 920*	2 920*
	-9			4 480*	4 480*	3 540*	3 540*	2 730*	2 730*		

Conditions	Load point height m	Load radius						At max. reach		
		10.5m		12.0m		13.5m		Rating over-front	Rating over-side or 360 degrees	metre
		Rating over-front	Rating over-side or 360 degrees	Rating over-front	Rating over-side or 360 degrees	Rating over-front	Rating over-side or 360 degrees	Rating over-front	Rating over-side or 360 degrees	
Boom 8.50 m	12							1 980*	1 980*	9.4
Arm 5.93 m	10.5							1 820*	1 820*	10.8
Counterweight	9							1 760*	1 760*	11.9
7 750 kg	7.5			2 020*	2 020*			1 730*	1 730*	12.6
600 mm grouser shoe	6			2 080*	2 080*			1 740*	1 740*	13.2
	4.5			2 370*	2 370*	1 960*	1 960	1 780*	1 780*	13.6
	3	2 550*	2 550*	2 290*	2 290*	2 090*	2 010	1 870*	1 870*	13.8
	1.5	2 740*	2 740*	2 400*	2 400	2 150*	1 970	1 980*	1 880	13.8
0 (Ground)	0	2 900*	2 870	2 500*	2 330	2 190*	1 920	2 150*	1 880	13.7
	-1.5	3 020*	2 770	2 570*	2 270			2 210*	1 920	13.4
	-3	3 050*	2 720	2 560*	2 250			2 270*	2 030	12.9
	-4.5	2 980*	2 720	2 420*	2 280			2 330*	2 220	12.2
	-6	2 730*	2 730*					2 370*	2 370*	11.3
	-7.5							2 350*	2 350*	10.1
	-9							2 210*	2 210*	8.4

ZX250LCN TYPE HE15LD SUPER LONG FRONT



Rating over-side or 360 degrees

Unit: kg

Conditions	Load point height m	Load radius									
		3m		4.5m		6m		7.5m		9m	
		Rating over-front	Rating over-side or 360 degrees	Rating over-front	Rating over-side or 360 degrees	Rating over-front	Rating over-side or 360 degrees	Rating over-front	Rating over-side or 360 degrees	Rating over-front	Rating over-side or 360 degrees
Boom 8.50 m	12									2 230*	2 230*
Arm 5.93 m	10.5									2 110*	2 110*
Counterweight	9									2 120*	2 120*
7 750 kg	7.5									2 230*	2 230*
600 mm grouser shoe	6									2 410*	2 410*
	4.5					3 680*	3 680*	3 060*	3 060*	2 660*	2 660*
	3	4 290*	4 290*	6 180*	6 180*	4 430*	4 430*	3 500*	3 500*	2 940*	2 940*
	1.5			7 440*	7 440*	5 140*	5 140*	3 940*	3 940*	3 220*	3 220*
0 (Ground)	0	2 320*	2 320*	5 900*	5 900*	5 660*	5 660*	4 290*	4 280	3 460*	3 320*
	-1.5	3 430*	3 430*	6 140*	6 140*	5 940*	5 500	4 530*	4 080	3 630*	3 180
	-3	4 700*	4 700*	7 150*	7 150*	5 980*	5 400	4 610*	3 980	3 700*	3 100
	-4.5	6 120*	6 120*	7 760*	7 760*	5 810*	5 420	4 530*	3 970	3 650*	3 090
	-6	7 780*	7 780*	7 070	7 070	5 400*	5 400*	4 260*	4 040	3 420*	3 140
	-7.5	8 140*	8 140*	6 020*	6 020*	4 690*	4 690*	3 710*	3 710*	2 920*	2 920*
	-9			4 480*	4 480*	3 540*	3 540*	2 720*	2 720*		

Conditions	Load point height m	Load radius						At max. reach		
		10.5m		12.0m		13.5m		Rating over-front	Rating over-side or 360 degrees	metre
		Rating over-front	Rating over-side or 360 degrees	Rating over-front	Rating over-side or 360 degrees	Rating over-front	Rating over-side or 360 degrees	Rating over-front	Rating over-side or 360 degrees	
Boom 8.50 m	12							1 980*	1 980*	9.4
Arm 5.93 m	10.5							1 820*	1 820*	10.8
Counterweight	9							1 760*	1 760*	11.9
7 750 kg	7.5			2 020*	2 020*			1 730*	1 730*	12.6
600 mm grouser shoe	6			2 080*	2 080*			1 740*	1 740*	13.2
	4.5			2 350*	2 350*	1 960*	1 900	1 780*	1 780*	13.6
	3	2 550*	2 550*	2 290*	2 290*	2 090*	1 860	1 870*	1 780	13.8
	1.5	2 740*	2 740*	2 400*	2 230	2 150*	1 810	1 980*	1 730	13.8
0 (Ground)	0	2 900*	2 650	2 500*	2 150	2 190*	1 770	2 150*	1 720	13.7
	-1.5	3 020*	2 550	2 570*	2 090			2 210*	1 760	13.4
	-3	3 050*	2 500	2 560*	2 070			2 270*	1 870	12.9
	-4.5	2 980*	2 500	2 420*	2 090			2 330*	2 040	12.2
	-6	2 730*	2 560					2 370*	2 340	11.3
	-7.5							2 350*	2 350*	10.1
	-9							2 210*	2 210*	8.4

SPECIFICATIONS

ZX300LC / ZX300LCN SUPER LONG FRONT

ENGINE

Model	Isuzu 6HK1X
Type	4-cycle water-cooled, common rail direct injection
Aspiration	Variable geometry turbocharged, intercooled, cooled EGR
Aftertreatment	DOC+CSF+SCR system
No. of cylinders	6
Rated power	
ISO 14396	197 kW at 1 900 min ⁻¹ (rpm)
ISO 9249, net	186 kW at 1 900 min ⁻¹ (rpm)
SAE J1349, net.....	186 kW at 1 900 min ⁻¹ (rpm)
Maximum torque	1050 Nm at 1 500 min ⁻¹ (rpm)
Piston displacement	7.790 L
Bore and stroke.....	115 mm x 125 mm
Batteries.....	2 x 12 V / 128 Ah

HYDRAULIC SYSTEM

Hydraulic Pumps

Main pumps	3 variable displacement axial piston pump
Maximum oil flow	2 x 236 L/min
.....	1 x 210 L/min
Pilot pump.....	1 gear pump
Maximum oil flow	34.7 L/min

Hydraulic Motors

Travel	2 variable displacement axial piston motors
Swing	1 axial piston motor

Relief Valve Settings

Implement circuit	34.3 MPa
Swing circuit	32.4 MPa
Travel circuit	34.3 MPa
Pilot circuit	3.9 MPa
Power boost	38.0 MPa

Hydraulic Cylinders

ZX300LC / ZX300LCN TYPE HE15LD SUPER LONG FRONT

	Quantity	Bore	Rod diameter
Boom	2	125 mm	95 mm
Arm	1	170 mm	115 mm
Bucket	1	115 mm	80 mm

ZX300LC / ZX300LCN TYPE HE18LD SUPER LONG FRONT

	Quantity	Bore	Rod diameter
Boom	2	135 mm	95 mm
Arm	1	150 mm	105 mm
Bucket	1	105 mm	75 mm

UPPER STRUCTURE

Revolving Frame

D-section frame for resistance to deformation.

Swing Device

Axial piston motor with planetary reduction gear is bathed in oil. Swing circle is single-row. Swing parking brake is spring-set/hydraulic-released disc type.

Swing speed.....	6.7 min ⁻¹ (rpm)
Swing torque	77.6 kNm (7 913 kgfm)

UNDERCARRIAGE

Tracks

Heat-treated connecting pins with dirt seals. Hydraulic (grease) track adjusters with shock-absorbing recoil springs.

Numbers of Rollers and Shoes on Each Side

ZX300LC / ZX300LCN

Upper rollers.....	2
Lower rollers.....	8
Track shoes.....	48
Track guards	3

Travel Device

Each track driven by 2-speed axial piston motor. Parking brake is spring-set/hydraulic-released disc type. Automatic transmission system : High-Low.

Travel speeds	High : 0 to 5.2 km/h
	Low : 0 to 3.1 km/h
Maximum traction force ...	246 kN
Gradeability	70% (35 degree) continuous

SOUND LEVEL

Sound level in cab according to ISO 6396 Lpa 69 dB(A)
 External sound level according to ISO 6395 and
 EU Directive 2000/14/EC LwA 103 dB(A)

SERVICE REFILL CAPACITIES

ZX300LC / ZX300LCN

Fuel tank	510.0 L
Engine coolant	48.0 L
Engine oil	48.0 L
Swing device	12.0 L
Travel device (each side)	9.4 L
Hydraulic system	294.0 L
Hydraulic oil tank	163.0 L
DEF/AdBlue® tank	70.0 L

WEIGHTS AND GROUND PRESSURE

ZX300LC TYPE HE15LD SUPER LONG FRONT:

Equipped with 8.70 m monoblock boom, 6.10 m arm and 0.7 m³ bucket (SAE, PCSA heaped), 7 750 kg counterweight.

Shoe type	Shoe width	Operating weight	Ground pressure
Triple grouser	600 mm	33 100 kg	63 kPa (0.64 kgf/cm ²)
	700 mm	33 500 kg	54 kPa (0.55 kgf/cm ²)
	800 mm	33 900 kg	48 kPa (0.49 kgf/cm ²)
	900 mm	34 300 kg	43 kPa (0.44 kgf/cm ²)

ZX300LCN TYPE HE15LD SUPER LONG FRONT:

Equipped with 8.70 m monoblock boom, 6.10 m arm and 0.7 m³ bucket (SAE, PCSA heaped), 7 750 kg counterweight.

Shoe type	Shoe width	Operating weight	Ground pressure
Triple grouser	600 mm	33 000 kg	62 kPa (0.63 kgf/cm ²)
	700 mm	33 300 kg	54 kPa (0.55 kgf/cm ²)
	800 mm	33 700 kg	48 kPa (0.49 kgf/cm ²)
	900 mm	34 100 kg	43 kPa (0.44 kgf/cm ²)

ZX300LC TYPE HE18LD SUPER LONG FRONT:

Equipped with 10.23 m monoblock boom, 7.28 m arm and 0.4 m³ bucket (SAE, PCSA heaped), 7 750 kg counterweight.

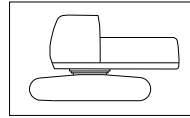
Shoe type	Shoe width	Operating weight	Ground pressure
Triple grouser	600 mm	33 100 kg	63 kPa (0.64 kgf/cm ²)
	700 mm	33 400 kg	54 kPa (0.55 kgf/cm ²)
	800 mm	33 800 kg	48 kPa (0.49 kgf/cm ²)
	900 mm	34 200 kg	43 kPa (0.44 kgf/cm ²)

ZX300LCN TYPE HE18LD SUPER LONG FRONT:

Equipped with 10.23 m monoblock boom, 7.28 m arm and 0.4 m³ bucket (SAE, PCSA heaped), 7 750 kg counterweight.

Shoe type	Shoe width	Operating weight	Ground pressure
Triple grouser	600 mm	32 900 kg	62 kPa (0.63 kgf/cm ²)
	700 mm	33 300 kg	54 kPa (0.55 kgf/cm ²)
	800 mm	33 700 kg	48 kPa (0.49 kgf/cm ²)
	900 mm	34 100 kg	43 kPa (0.44 kgf/cm ²)

Basic Machine Weight and Overall width



Excluding front end attachment, additional counterweight, fuel, hydraulic oil and coolant etc. Including counterweight.

ZX300LC

Shoe width	Weight	Overall width
600 mm	26 600 kg	3 190 mm
700 mm	27 000 kg	3 290 mm
800 mm	27 400 kg	3 390 mm
900 mm	27 800 kg	3 490 mm

ZX300LCN

Shoe width	Weight	Overall width
600 mm	26 500 kg	2 990 mm
700 mm	26 900 kg	3 090 mm
800 mm	27 300 kg	3 190 mm
900 mm	27 600 kg	3 290 mm

BUCKET SPECIFICATIONS AND COMPATIBILITY

ZX300LC / ZX300LCN

	Capacity ISO heaped	Width Without side cutters	Weight	Recommendation			
				ZX300LC		ZX300LCN	
				HE15LD	HE18LD	HE15LD	HE18LD
Bucket radius 1230 mm	0.40 m ³	720 mm	340 kg	⊙	○	⊙	□
	0.45 m ³	800 mm	370 kg	⊙	□	⊙	□
	0.50 m ³	890 mm	390 kg	⊙	□	⊙	-
	0.59 m ³	950 mm	410 kg	⊙	-	⊙	-
	0.66 m ³	1 030 mm	430 kg	⊙	-	⊙	-
Bucket radius 1430 mm	0.52 m ³	790 m ³	450 kg	⊙	-	⊙	-
	0.60 m ³	925 m ³	480 kh	⊙	-	⊙	-
	0.70 m ³	1 005 m ³	520 kg	⊙	-	○	-
	0.82 m ³	1 140 m ³	560 kg	□	-	□	-
Slope finishing	-	1 600 mm	430 kg	-	◇	-	◇
	-	1 700 mm	520 kg	◇	-	◇	-
Max. weight				2 040 kg	1 060 kg	1 910 kg	1 060 kg

⊙ Suitable for materials with density of 1 800 kg/m³ or less

○ Suitable for materials with density of 1 600 kg/m³ or less

□ Suitable for materials with density of 1 100 kg/m³ or less

◇ Slope-finishing service

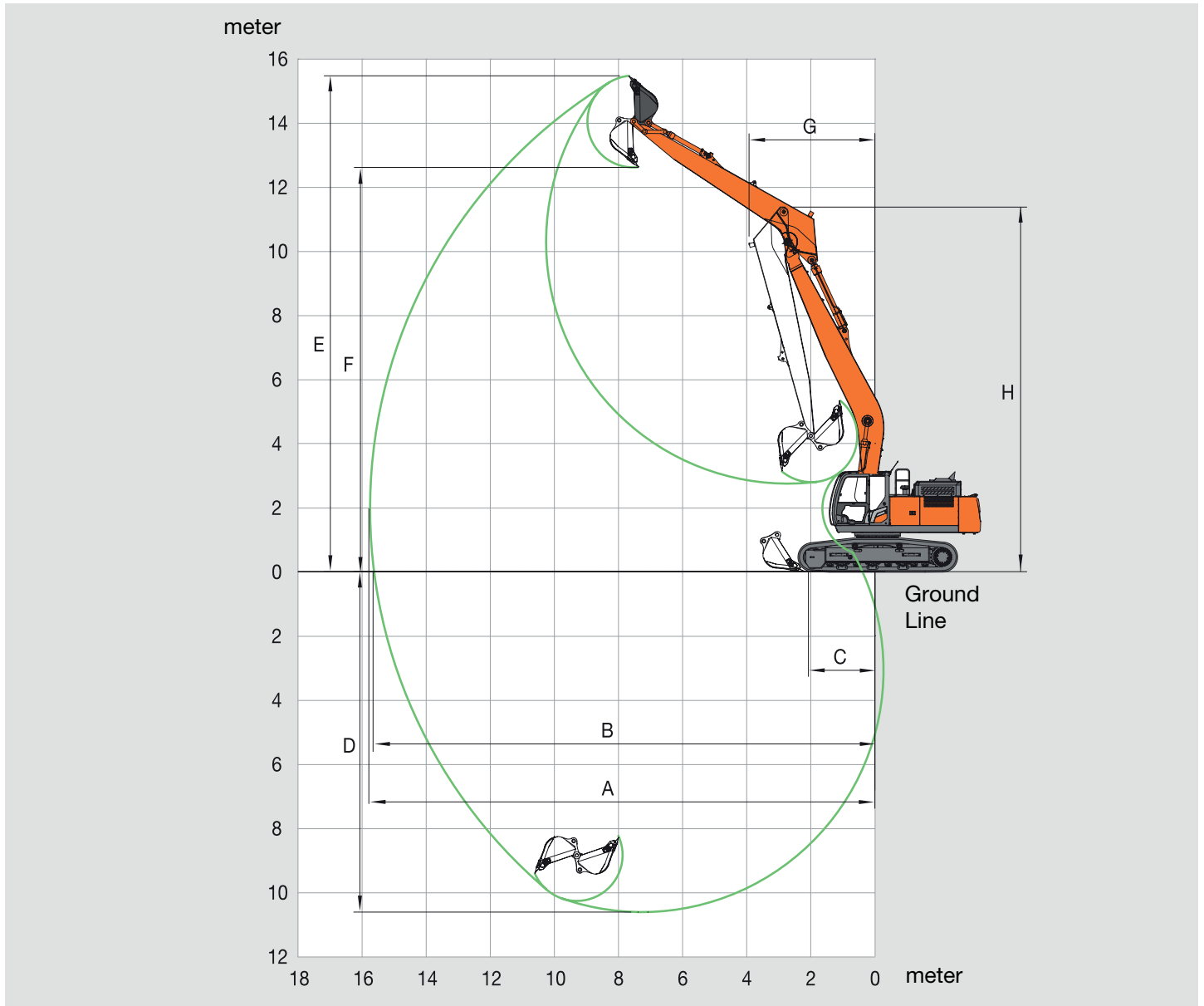
- Not applicable

• Use the bucket in the range where the total weight of bucket and loading material does not exceed maximum weight described above.

SPECIFICATIONS

ZX300LC / ZX300LCN

WORKING RANGES



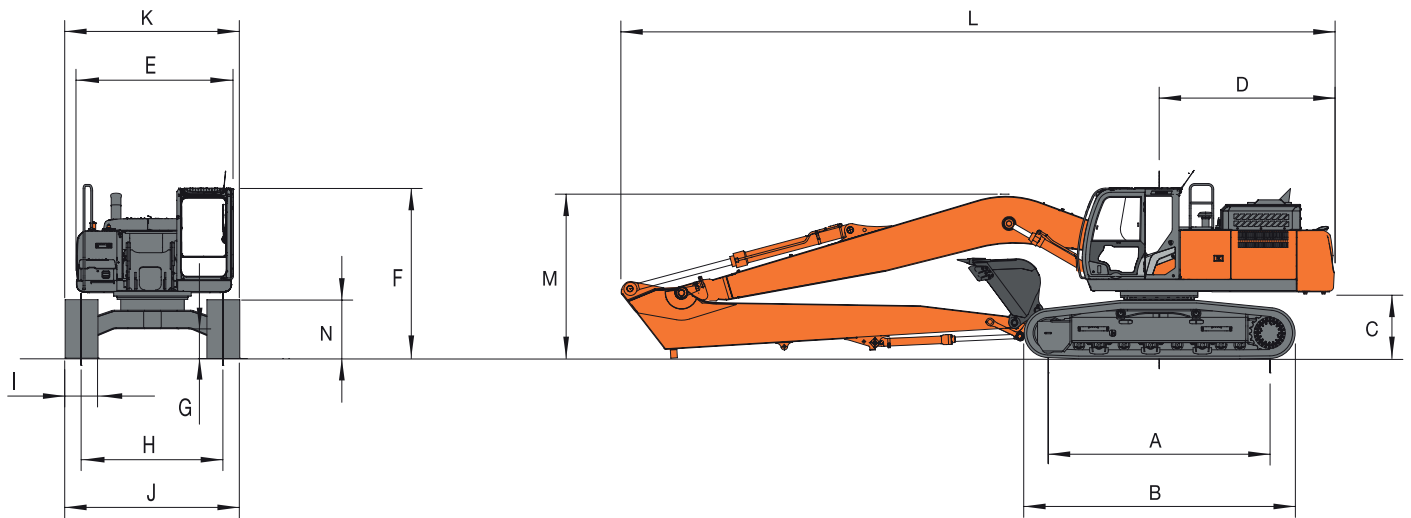
Unit: mm

	ZX300LC / ZX300LCN TYPE HE15LD
A Max. digging reach	15 750
B Max. digging reach (on ground)	15 630
C Max. level crowding distance	2 110
D Max. digging depth	10 620
E Max. cutting height	15 450
F Max. dumping height	12 560
G Min. swing radius	3 920
H Min. swing radius height	11 370
Bucket digging force ISO	84 kN (8 560 kgf)
Arm crowd force ISO	67 kN (6 830 kgf)

• Excluding track shoe lug

Note: Working range can be changed, depending on bucket size.

DIMENSIONS

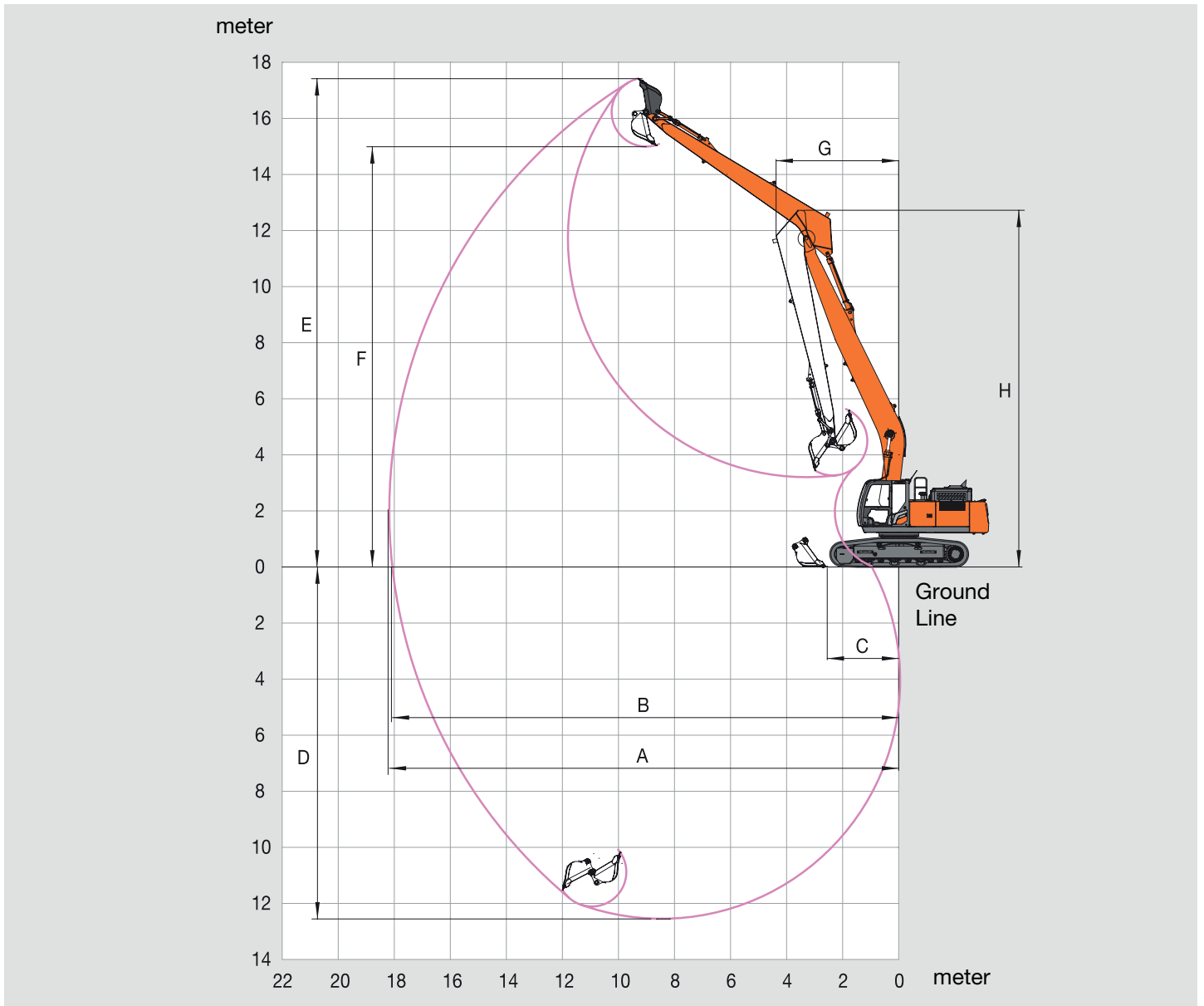


Unit: mm

	ZX300LC TYPE HE15LD	ZX300LCN TYPE HE15LD
A Distance between tumblers	4 050	4 050
B Undercarriage length	4 940	4 940
* C Counterweight clearance	1 130	1 130
D Rear-end swing radius	3 250	3 250
E Overall width of upper structure	2 990	2 990
F Overall height of cab	3 120	3 120
* G Min. ground clearance	510	510
H Track gauge	2 590	2 390
I Track shoe width	600 / 700 / 800 / 900	600 / 700 / 800 / 900
J Undercarriage width	3 190 / 3 290 / 3 390 / 3 490	2 990 / 3 090 / 3 190 / 3 290
K Overall width	3 190 / 3 290 / 3 390 / 3 490	2 990 / 3 090 / 3 190 / 3 290
L Overall length	13 190	13 190
M Overall height of boom	3 060	3 060
N Track height with triple grouser shoes	1 070	1 070

* Excluding track shoe lug

WORKING RANGES



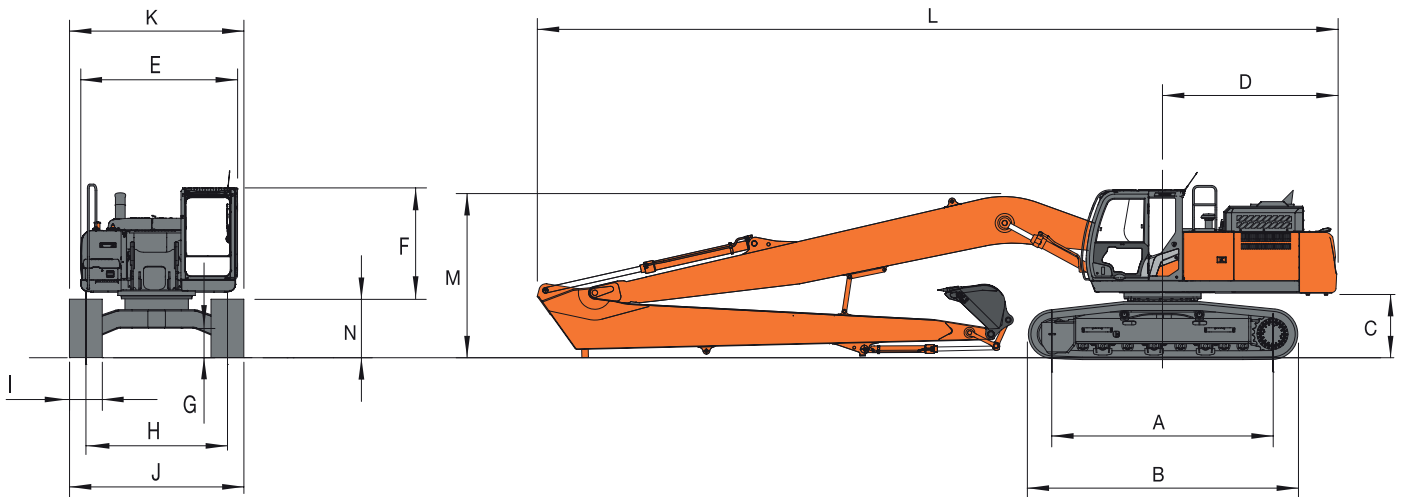
Unit: mm

	ZX300LC / ZX300LCN TYPE HE18LD
A Max. digging reach	18 180
B Max. digging reach (on ground)	18 070
C Max. level crowding distance	2 550
D Max. digging depth	12 550
E Max. cutting height	17 420
F Max. dumping height	14 990
G Min. swing radius	4 360
H Min. swing radius height	12 720
Bucket digging force ISO	74 kN (7 560 kgf)
Arm crowd force ISO	52 kN (5 360 kgf)

• Excluding track shoe lug

Note: Working range can be changed, depending on bucket size.

DIMENSIONS



Unit: mm

	ZX300LC TYPE HE18LD	ZX300LCN TYPE HE18LD
A Distance between tumblers	4 050	4 050
B Undercarriage length	4 940	4 940
* C Counterweight clearance	1 130	1 130
D Rear-end swing radius	3 250	3 250
E Overall width of upper structure	2 990	2 990
F Overall height of cab	3 120	3 120
* G Min. ground clearance	510	510
H Track gauge	2 590	2 390
I Track shoe width	600 / 700 / 800 / 900	600 / 700 / 800 / 900
J Undercarriage width	3 190 / 3 290 / 3 390 / 3 490	2 990 / 3 090 / 3 190 / 3 290
K Overall width	3 190 / 3 290 / 3 390 / 3 490	2 990 / 3 090 / 3 190 / 3 290
L Overall length	14 690	14 690
M Overall height of boom	3 030	3 030
N Track height with triple grouser shoes	1 070	1 070

* Excluding track shoe lug

LIFTING CAPACITIES

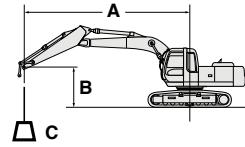
ZX300LC / ZX300LCN

Metric measure

Notes: 1. Ratings are based on ISO 10567.

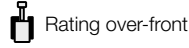
- Lifting capacity of the ZAXIS series does not exceed 75% of tipping load with the machine on firm, level ground or 87% full hydraulic capacity.
- The load point is the center-line of the bucket pivot mounting pin on the arm.
- * Indicates load limited by hydraulic capacity.
- 0m = Ground.

For lifting capacities, subtract bucket and quick hitch weight from lifting capacities.



- A: Load radius
- B: Load point height
- C: Lifting capacity

ZX300LC TYPE HE15LD SUPER LONG FRONT



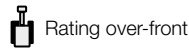
Rating over-side or 360 degrees

Unit: kg

Conditions	Load point height m	Load radius									
		3m		4.5m		6m		7.5m		9m	
Boom 8.70 m	13.5										
Arm 6.10 m	12.0										
Counterweight 7 200 kg	10.5									3 130*	3 130*
Additional counterweight 550 kg	9									3 080*	3 080*
600 mm grouser shoe	7.5									3 220*	3 220*
	6							3 880*	3 880*	3 440*	3 440*
	4.5	3 950*	3 950*	8 550*	8 550*	5 280*	5 280*	4 350*	4 350*	3 740*	3 740*
	3			7 730*	7 730*	6 150*	6 150*	4 860*	4 860*	4 080*	4 080*
	1.5	2 430*	2 430*	5 830*	5 830*	6 920*	6 920*	5 330*	5 330*	4 360*	4 360*
	0 (Ground)	3 510*	3 510*	6 070*	6 070*	7 440*	7 440*	5 690*	5 690*	4 600*	4 240*
	-1.5	4 710*	4 710*	7 020*	7 020*	7 630*	7 020*	5 880*	5 200*	4 750*	4 060*
	-3	6 050*	6 050*	8 400*	8 400*	7 160*	6 930*	5 670*	5 060*	4 600*	3 940*
	-4.5	7 560*	7 560*	8 290*	8 290*	6 500*	6 500*	5 200*	5 140*	4 220*	4 000*
	-6			6 810*	6 810*	5 470*	5 470*	4 410*	4 410*	3 520*	3 520*
	-7.5					3 920*	3 920*	3 110*	3 110*		
	-9										

Conditions	Load point height m	Load radius									
		10.5m		12m		13.5m		At max. reach		metre	
Boom 8.70 m	13.5							2 390*	2 390*	8.4	
Arm 6.10 m	12.0							2 120*	2 120*	10.1	
Counterweight 7 200 kg	10.5	2 920*	2 920*					1 970*	1 970*	11.5	
Additional counterweight 550 kg	9	2 900*	2 900*	2 790*	2 790*			1 900*	1 900*	12.4	
600 mm grouser shoe	7.5	2 980*	2 980*	2 800*	2 800*			1 860*	1 860*	13.2	
	6	3 120*	3 120*	2 870*	2 870*	2 490*	2 490*	1 870*	1 870*	13.7	
	4.5	3 300*	3 300*	2 980*	2 980*	2 740*	2 480*	1 900*	1 900*	14.1	
	3	3 510*	3 510*	3 110*	2 990*	2 800*	2 410*	1 980*	1 980*	14.3	
	1.5	3 700*	3 550*	3 230*	2 870*	2 860*	2 350*	2 080*	2 080*	14.3	
	0 (Ground)	3 860*	3 390*	3 320*	2 770*	2 890*	2 290*	2 240*	2 110*	14.2	
	-1.5	3 950*	3 270*	3 360*	2 690*	2 850*	2 260*	2 430*	2 160*	13.9	
	-3	3 940*	3 210*	3 290*	2 660*			2 720*	2 280*	13.4	
	-4.5	3 780*	3 200*	3 080*	2 680*			2 710*	2 490*	12.7	
	-6	3 400*	2 260*					2 650*	2 650*	11.9	
	-7.5	2 620*	2 620*					2 490*	2 490*	10.7	
	-9										

ZX300LCN TYPE HE15LD SUPER LONG FRONT



Rating over-side or 360 degrees

Unit: kg

Conditions	Load point height m	Load radius									
		3m		4.5m		6m		7.5m		9m	
Boom 8.70 m	13.5										
Arm 6.10 m	12.0										
Counterweight 7 200 kg	10.5									3 130*	3 130*
Additional counterweight 550 kg	9									3 040*	3 040*
600 mm grouser shoe	7.5									3 080*	3 080*
	6							3 880*	3 880*	3 220*	3 220*
	4.5	3 950*	3 950*	8 550*	8 550*	5 280*	5 280*	4 350*	4 350*	3 440*	3 440*
	3			7 730*	7 730*	6 150*	6 150*	4 860*	4 860*	3 740*	3 740*
	1.5	2 430*	2 430*	5 830*	5 830*	6 920*	6 920*	5 330*	5 330*	4 360*	4 090*
	0 (Ground)	3 510*	3 510*	6 070*	6 070*	7 440*	6 630*	5 690*	4 950*	4 600*	3 850*
	-1.5	4 710*	4 710*	7 020*	7 020*	7 630*	6 630*	5 880*	4 710*	4 750*	3 680*
	-3	6 050*	6 050*	8 400*	8 400*	7 160*	6 240*	5 670*	4 590*	4 750*	3 580*
	-4.5	7 560*	7 560*	8 290*	8 290*	6 500*	6 380*	5 200*	4 650*	4 600*	3 560*
	-6			6 810*	6 810*	5 470*	5 470*	4 410*	4 650*	4 220*	3 620*
	-7.5					3 920*	3 920*	3 110*	4 410*	3 520*	3 520*
	-9								3 110*		

Conditions	Load point height m	Load radius									
		10.5m		12m		13.5m		At max. reach		metre	
Boom 8.70 m	13.5							2 390*	2 390*	8.4	
Arm 6.10 m	12.0							2 120*	2 120*	10.1	
Counterweight 7 200 kg	10.5	2 920*	2 920*					1 970*	1 970*	11.5	
Additional counterweight 550 kg	9	2 900*	2 980*	2 790*	2 800*			1 900*	1 860*	12.4	
600 mm grouser shoe	7.5	3 120*	3 120*	2 870*	2 870*	2 490*	2 290	1 870*	1 860*	13.2	
	6	3 300*	3 300*	2 980*	2 840	2 740*	2 250	1 870*	1 870*	13.7	
	4.5	3 510*	3 420	3 110*	2 720	2 800*	2 180	1 900*	1 900*	14.1	
	3	3 700*	3 240	3 230*	2 610	2 860*	2 120	1 980*	1 950	14.3	
	1.5	3 860*	3 080	3 320*	2 500	2 890*	2 060	2 240*	1 900	14.2	
	0 (Ground)	3 950*	2 960	3 360*	2 420	2 850*	2 030	2 430*	1 950	13.9	
	-1.5	3 940*	2 890	3 290*	2 400			2 720*	2 050	13.4	
	-3	3 780*	2 890	3 080*	2 410			2 710*	2 240	12.7	
	-4.5	3 400*	2 950					2 650*	2 550	11.9	
	-6	3 400*	2 620*					2 490*	2 490*	10.7	
	-7.5										
	-9										

SPECIFICATIONS

ZX350LC / ZX350LCN SUPER LONG FRONT

ENGINE

Model	Isuzu 6HK1X
Type	4-cycle water-cooled, common rail direct injection
Aspiration	Variable geometry turbocharged, intercooled, cooled EGR
Aftertreatment	DOC+CSF+SCR system
No. of cylinders	6
Rated power	
ISO 14396	210 kW at 1 900 min ⁻¹
ISO 9249 : 2007	202 kW at 1 900 min ⁻¹
SAE J1349, net.....	202 kW at 1 900 min ⁻¹
Maximum torque.....	1080 Nm at 1 500 min ⁻¹
Piston displacement	7.790 L
Bore and stroke.....	115 mm x 125 mm
Batteries.....	2 x 12 V / 128 Ah

HYDRAULIC SYSTEM

Hydraulic Pumps

Main pumps.....	3 variable displacement axial piston pump
Maximum oil flow	2 x 288 L/min
.....	1 x 260 L/min
Pilot pump	1 gear pump
Maximum oil flow	36.8 L/min

Hydraulic Motors

Travel	2 variable displacement axial piston motors
Swing	1 axial piston motor

Relief Valve Settings

Implement circuit	34.3 MPa
Swing circuit	32.4 MPa
Travel circuit	34.3 MPa
Pilot circuit	3.9 MPa
Power boost	38.0 MPa

Hydraulic Cylinders

ZX350LC / ZX350LCN TYPE HE15LD SUPER LONG FRONT

	Quantity	Bore	Rod diameter
Boom	2	145 mm	100 mm
Arm	1	170 mm	115 mm
Bucket	1	130 mm	90 mm

ZX350LC / ZX350LCN TYPE HE18LD SUPER LONG FRONT

	Quantity	Bore	Rod diameter
Boom	2	145 mm	100 mm
Arm	1	170 mm	115 mm
Bucket	1	115 mm	80 mm

ZX350LC / ZX350LCN TYPE HE20LD/HE22 SUPER LONG FRONT

	Quantity	Bore	Rod diameter
Boom	2	145 mm	100 mm
Arm	1	170 mm	115 mm
Bucket	1	105 mm	75 mm

UPPER STRUCTURE

Revolving Frame

D-section frame for resistance to deformation.

Swing Device

Axial piston motor with planetary reduction gear is bathed in oil. Swing circle is single-row. Swing parking brake is spring-set/hydraulic-released disc type.

Swing speed.....	6.3 min ⁻¹ (rpm)
Swing torque	99.6 kNm (10 156 kgfm)

UNDERCARRIAGE

Tracks

Heat-treated connecting pins with dirt seals. Hydraulic (grease) track adjusters with shock-absorbing recoil springs.

Numbers of Rollers and Shoes on Each Side

ZX350LC / ZX350LCN

Upper rollers	2
Lower rollers	8
Track shoes	48
Track guards	3

Travel Device

Each track driven by 2-speed axial piston motor. Parking brake is spring-set/hydraulic-released disc type. Automatic transmission system : High-Low.

Travel speeds	High : 0 to 5.0km/h
	Low : 0 to 3.2 km/h

Maximum traction force ... 298 kN

Gradeability

70% (35 degree) continuous

SOUND LEVEL

Sound level in cab according to ISO 6396LpA 71 dB(A)

External sound level according to ISO 6395 and EU Directive 2000/14/EC LwA 104 dB(A)

SERVICE REFILL CAPACITIES

ZX350LC / ZX350LCN

Fuel tank	630.0 L
Engine coolant	48.0 L
Engine oil	48.0 L
Swing device	15.7 L
Travel device (each side)	11.0 L
Hydraulic system	340.0 L
Hydraulic oil tank	198.0 L
DEF/AdBlue® tank	70.0 L

WEIGHTS AND GROUND PRESSURE

ZX350LC TYPE HE15LD SUPER LONG FRONT:

Equipped with 9.00 m monoblock boom, 6.00 m arm and 1.0 m³ bucket (SAE, PCSA heaped), 10 300 kg counterweight.

Shoe type	Shoe width	Operating weight	Ground pressure
Triple grouser	600 mm	38 300 kg	73 kPa (0.74 kgf/cm ²)
	700 mm	38 700 kg	63 kPa (0.64 kgf/cm ²)
	800 mm	39 100 kg	55 kPa (0.56 kgf/cm ²)
	900 mm	39 500 kg	50 kPa (0.51 kgf/cm ²)

ZX350LCN TYPE HE15LD SUPER LONG FRONT:

Equipped with 9.00 m monoblock boom, 6.00 m arm and 1.0 m³ bucket (SAE, PCSA heaped), 10 300 kg counterweight.

Shoe type	Shoe width	Operating weight	Ground pressure
Triple grouser	600 mm	38 100 kg	72 kPa (0.73 kgf/cm ²)
	700 mm	38 500 kg	62 kPa (0.63 kgf/cm ²)

ZX350LC TYPE HE18LD SUPER LONG FRONT:

Equipped with 10.45 m monoblock boom, 7.02 m arm and 0.7m³ bucket (SAE, PCSA heaped), 10 300 kg counterweight.

Shoe type	Shoe width	Operating weight	Ground pressure
Triple grouser	600 mm	38 400 kg	73 kPa (0.74 kgf/cm ²)
	700 mm	38 700 kg	63 kPa (0.64 kgf/cm ²)
	800 mm	39 100 kg	55 kPa (0.56 kgf/cm ²)
	900 mm	39 500 kg	50 kPa (0.51 kgf/cm ²)

ZX350LCN TYPE HE18LD SUPER LONG FRONT:

Equipped with 10.45 m monoblock boom, 7.02 m arm and 0.7 m³ bucket (SAE, PCSA heaped), 10 300 kg counterweight.

Shoe type	Shoe width	Operating weight	Ground pressure
Triple grouser	600 mm	38 200 kg	72 kPa (0.73 kgf/cm ²)
	700 mm	38 500 kg	62 kPa (0.63 kgf/cm ²)

ZX350LC TYPE HE20LD SUPER LONG FRONT:

Equipped with 11.80 m monoblock boom, 8.20 m arm and 0.45 m³ bucket (SAE, PCSA heaped), 9 940 kg counterweight.

Shoe type	Shoe width	Operating weight	Ground pressure
Triple grouser	600 mm	38 100 kg	72 kPa (0.73 kgf/cm ²)
	700 mm	38 500 kg	63 kPa (0.63 kgf/cm ²)
	800 mm	38 900 kg	55 kPa (0.56 kgf/cm ²)
	900 mm	39 200 kg	49 kPa (0.50 kgf/cm ²)

ZX350LCN TYPE HE20LD SUPER LONG FRONT:

Equipped with 11.80 m monoblock boom, 8.20 m arm and 0.45 m³ bucket (SAE, PCSA heaped), 9 940 kg counterweight.

Shoe type	Shoe width	Operating weight	Ground pressure
Triple grouser	600 mm	37 900 kg	72 kPa (0.73 kgf/cm ²)
	700 mm	38 300 kg	62 kPa (0.63 kgf/cm ²)

ZX350LC TYPE HE22 SUPER LONG FRONT:

Equipped with 12.30 m monoblock boom, 9.45 m arm and 0.40 m³ bucket (SAE, PCSA heaped), 9 940 kg counterweight.

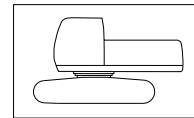
Shoe type	Shoe width	Operating weight	Ground pressure
Triple grouser	600 mm	38 100 kg	72 kPa (0.73 kgf/cm ²)
	700 mm	38 500 kg	62 kPa (0.63 kgf/cm ²)
	800 mm	38 900 kg	55 kPa (0.56 kgf/cm ²)
	900 mm	39 300 kg	49 kPa (0.50 kgf/cm ²)

ZX350LCN TYPE HE22 SUPER LONG FRONT:

Equipped with 12.30 m monoblock boom, 9.45 m arm and 0.40 m³ bucket (SAE, PCSA heaped), 9 940 kg counterweight.

Shoe type	Shoe width	Operating weight	Ground pressure
Triple grouser	600 mm	37 900 kg	72 kPa (0.73 kgf/cm ²)
	700 mm	38 300 kg	62 kPa (0.63 kgf/cm ²)

Basic Machine Weight and Overall width



Excluding front end attachment, additional counterweight, fuel, hydraulic oil and coolant etc. Including counterweight.

ZX350LC

Shoe width	Weight	Overall width
600 mm	29 900 kg	3 190 mm
700 mm	30 300 kg	3 290 mm
800 mm	30 700 kg	3 390 mm
900 mm	31 100 kg	3 490 mm

ZX350LCN

Shoe width	Weight	Overall width
600 mm	29 900 kg	2 990 mm
700 mm	30 200 kg	3 090 mm

BUCKET SPECIFICATIONS AND COMPATIBILITY

ZX350LC / ZX350LCN

	Capacity ISO heaped	Width Without side cutters	Weight	Recommendation							
				ZX350LC				ZX350LCN			
				HE15LD	HE18LD	HE20LD	HE22	HE15LD	HE18LD	HE20LD	HE22
Bucket radius 1 230 mm	0.40 m ³	720 mm	340 kg	⊙	⊙	⊙	○	⊙	⊙	⊙	□
	0.45 m ³	800 mm	370 kg	⊙	⊙	⊙	□	⊙	⊙	□	-
	0.50 m ³	890 mm	390 kg	⊙	⊙	○	□	⊙	⊙	□	-
	0.59 m ³	950 mm	410 kg	⊙	⊙	□	-	⊙	⊙	□	-
	0.66 m ³	1030 mm	430 kg	⊙	⊙	□	-	⊙	⊙	-	-
Bucket radius 1 430 mm	0.52 m ³	790 mm	450 kg	⊙	⊙	-	-	⊙	⊙	-	-
	0.60 m ³	925 mm	480 kg	⊙	⊙	-	-	⊙	⊙	-	-
	0.70 m ³	1 005 mm	520 kg	⊙	⊙	-	-	⊙	○	-	-
	0.82 m ³	1 140 mm	560 kg	⊙	□	-	-	⊙	□	-	-
Bucket radius 1 560 mm	0.80 m ³	950 mm	755 kg	⊙	-	-	-	⊙	-	-	-
	1.00 m ³	1 130 mm	851 kg	⊙	-	-	-	○	-	-	-
	1.10 m ³	1 220 mm	901 kg	○	-	-	-	□	-	-	-
	1.25 m ³	1 360 mm	957 kg	□	-	-	-	□	-	-	-
	1.40 m ³	1 500 mm	1 020 kg	□	-	-	-	-	-	-	-
Slope finishing	--	1 600 mm	430 kg	-	-	◇	◇	-	-	◇	◇
	-	1 700 mm	520 kg	-	◇	-	-	-	◇	-	-
Max. weight				2 660 kg	1 880 kg	1 220 kg	1 010 kg	2 460 kg	1 710 kg	1 080 kg	870 kg

⊙ Suitable for materials with density of 1 800 kg/m³ or less

○ Suitable for materials with density of 1 600 kg/m³ or less

□ Suitable for materials with density of 1 100 kg/m³ or less

◇ Slope-finishing service

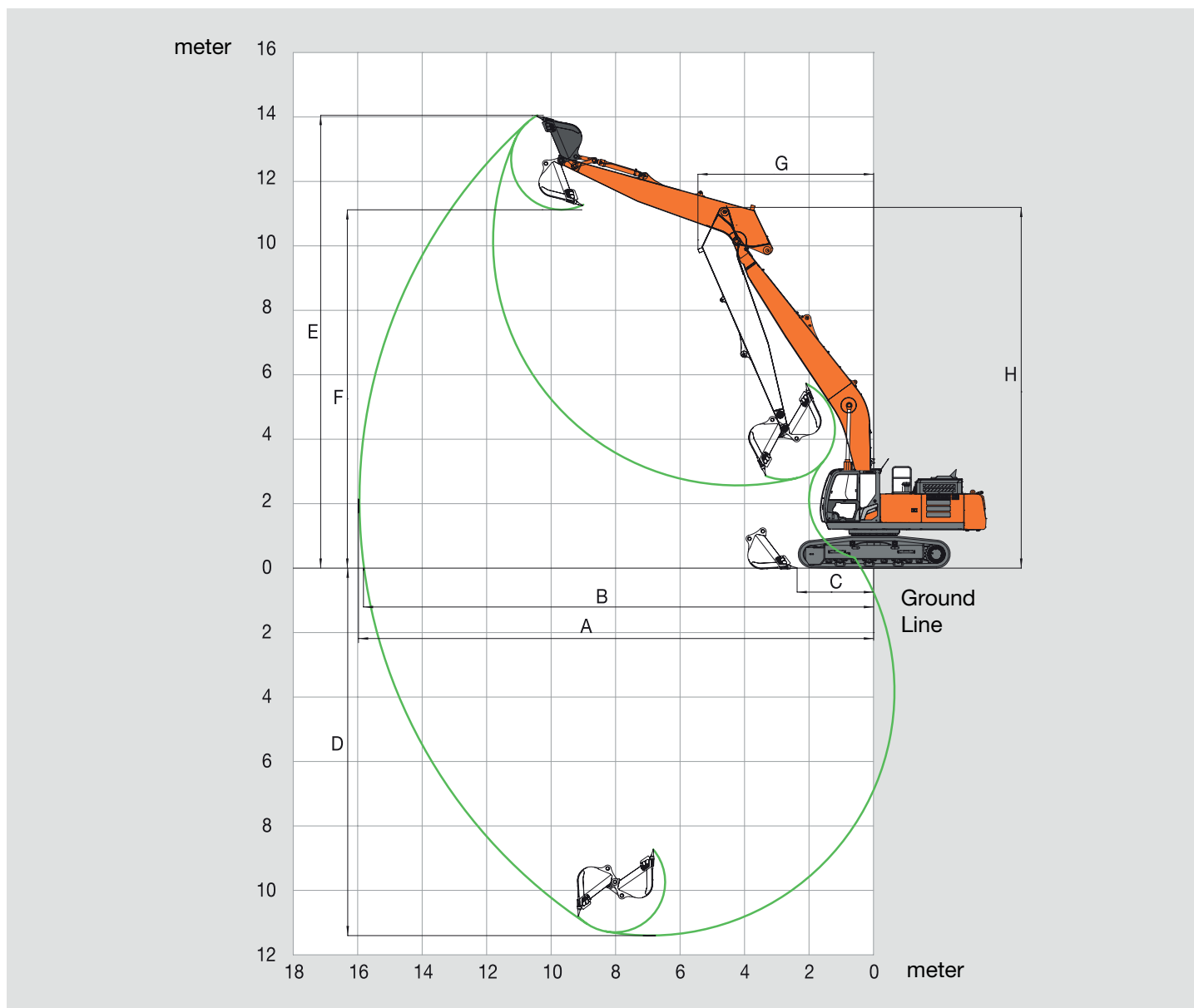
- Not applicable

• Use the bucket in the range where the total weight of bucket and loading material does not exceed maximum weight described above.

SPECIFICATIONS

ZX350LC / ZX350LCN

WORKING RANGES



Unit: mm

	ZX350LC / ZX350LCN TYPE HE15LD
A Max. digging reach	15 960
B Max. digging reach (on ground)	15 820
C Max. level crowding distance	2 370
D Max. digging depth	11 400
E Max. cutting height	14 050
F Max. dumping height	11 120
G Min. swing radius	5 450
H Min. swing radius height	11 120
Bucket digging force ISO	104 kN (10 600 kgf)
Arm crowd force ISO	83 kN (8 450 kgf)

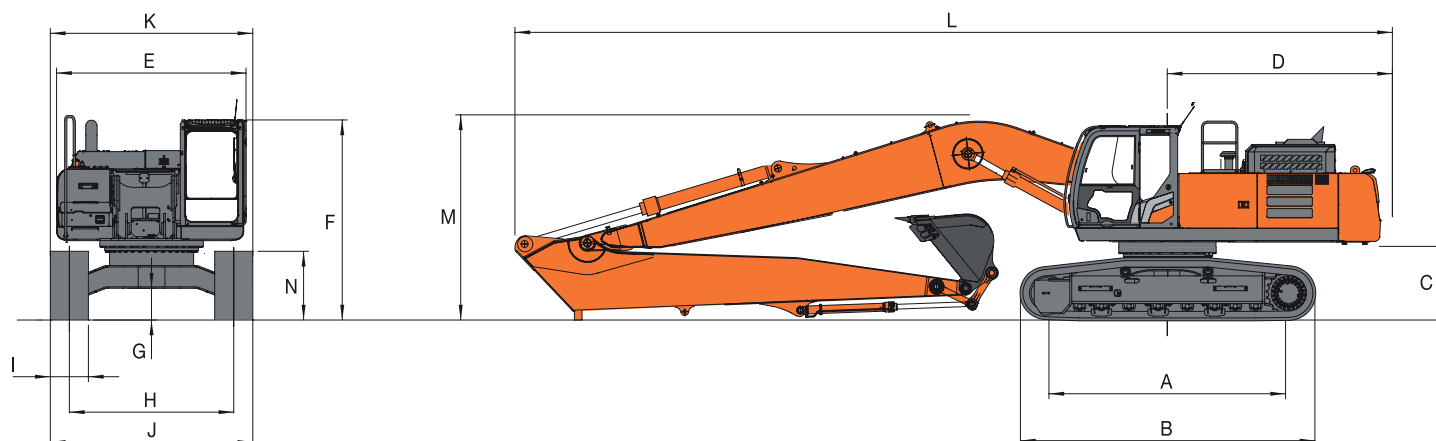
• Excluding track shoe lug

Note: Working range can be changed, depending on bucket size.

SPECIFICATIONS

ZX350LC / ZX350LCN

DIMENSIONS

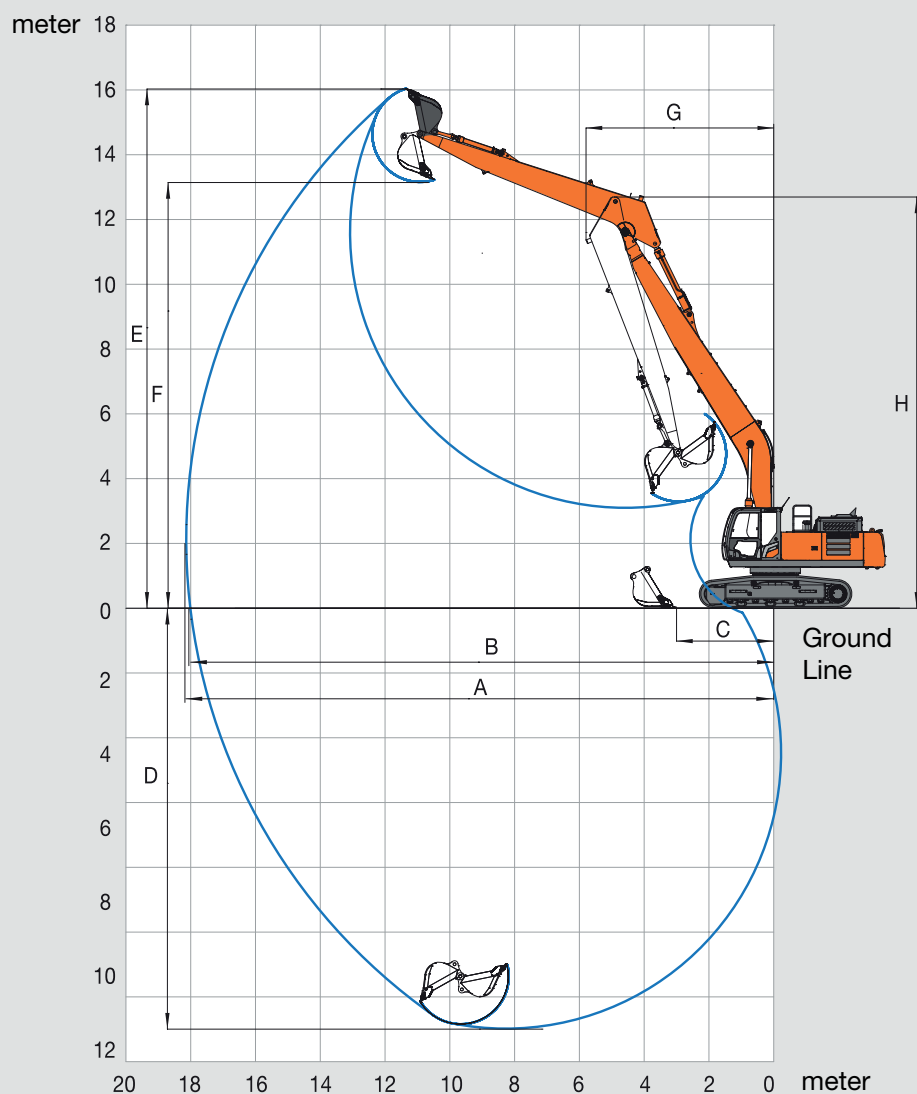


Unit: mm

	ZX350LC TYPE HE18LD	ZX350LCN TYPE HE18LD
A Distance between tumblers	4 050	4 050
B Undercarriage length	4 950	4 950
* C Counterweight clearance	1 160	1 160
D Rear-end swing radius	3 600	3 600
E Overall width of upper structure	2 990	2 990
F Overall height of cab	3 150	3 150
* G Min. ground clearance	500	500
H Track gauge	2 590	2 390
I Track shoe width	600 / 700 / 800 / 900	600 / 700
J Undercarriage width	3 190 / 3 290 / 3 390 / 3 490	2 990 / 3 090
K Overall width	3 190 / 3 290 / 3 390 / 3 490	2 990 / 3 090
L Overall length	15 330	15 330
M Overall height of boom	3 250	3 250
N Track height with triple grouser shoes	1 070	1 070

* Excluding track shoe lug

WORKING RANGES



Unit: mm

	ZX350LC / ZX350LCN TYPE HE18LD
A Max. digging reach	18 130
B Max. digging reach (on ground)	18 020
C Max. level crowding distance	3 000
D Max. digging depth	13 060
E Max. cutting height	16 000
F Max. dumping height	13 180
G Min. swing radius	5 680
H Min. swing radius height	12 690
Bucket digging force ISO	89 kN (9 030 kgf)
Arm crowd force ISO	74 kN (7 510 kgf)

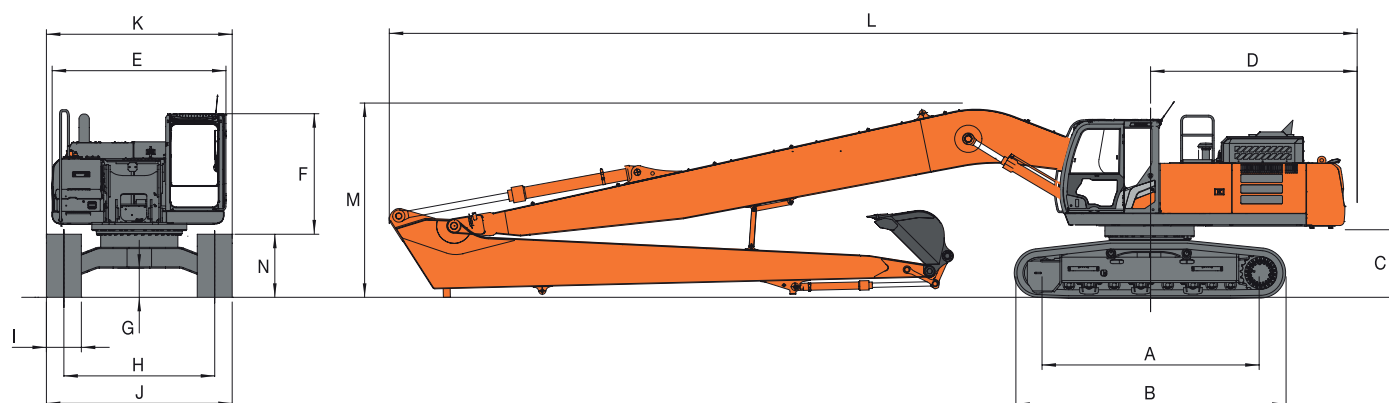
• Excluding track shoe lug

Note: Working range can be changed, depending on bucket size.

SPECIFICATIONS

ZX350LC / ZX350LCN

DIMENSIONS

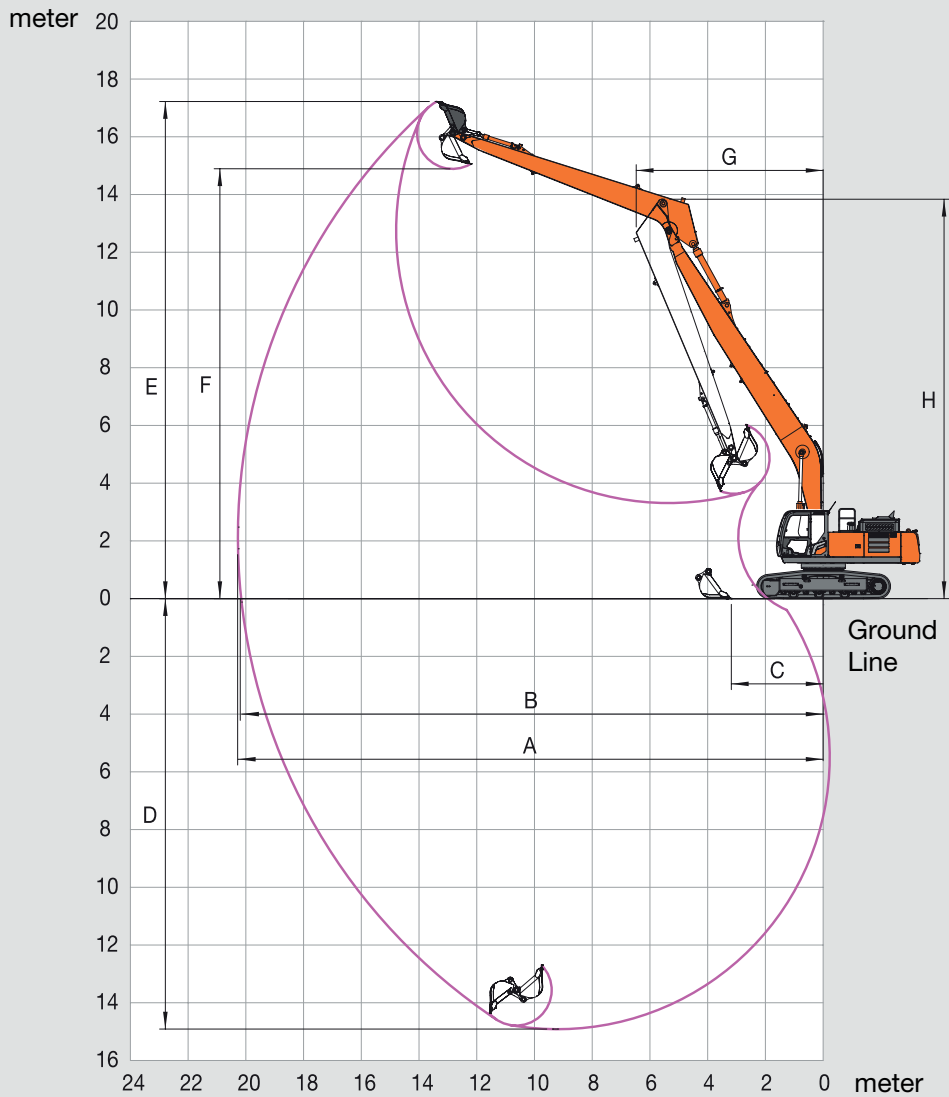


Unit: mm

	ZX350LC TYPE HE20LD	ZX350LCN TYPE HE20LD
A Distance between tumblers	4 050	4 050
B Undercarriage length	4 950	4 950
* C Counterweight clearance	1 160	1 160
D Rear-end swing radius	3 600	3 600
E Overall width of upper structure	2 990	2 990
F Overall height of cab	3 150	3 150
* G Min. ground clearance	500	500
H Track gauge	2 590	2 390
I Track shoe width	600 / 700 / 800 / 900	600 / 700
J Undercarriage width	3 190 / 3 290 / 3 390 / 3 490	2 990 / 3 090
K Overall width	3 190 / 3 290 / 3 390 / 3 490	2 990 / 3 090
L Overall length	16 710	16 710
M Overall height of boom	3 350	3 250
N Track height with triple grouser shoes	1 070	1 070

* Excluding track shoe lug

WORKING RANGES



Unit: mm

	ZX350LC / ZX350LCN TYPE HE20LD
A Max. digging reach	20 260
B Max. digging reach (on ground)	20 150
C Max. level crowding distance	3 180
D Max. digging depth	14 910
E Max. cutting height	17 220
F Max. dumping height	14 890
G Min. swing radius	6 470
H Min. swing radius height	13 840
Bucket digging force ISO	74 kN (7 510 kgf)
Arm crowd force ISO	65 kN (6 600 kgf)

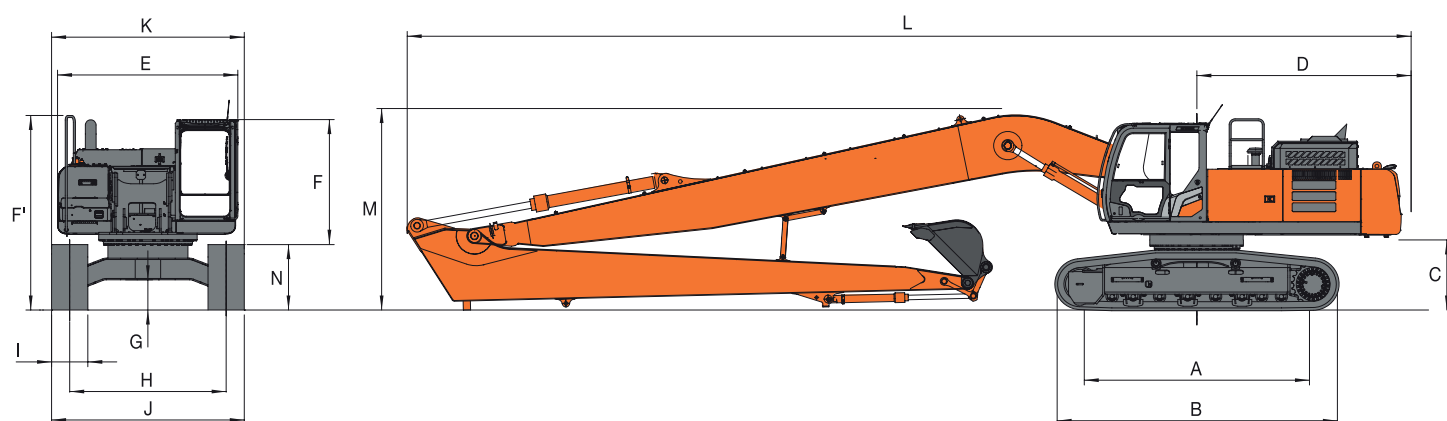
• Excluding track shoe lug

Note: Working range can be changed, depending on bucket size.

SPECIFICATIONS

ZX350LC / ZX350LCN

DIMENSIONS

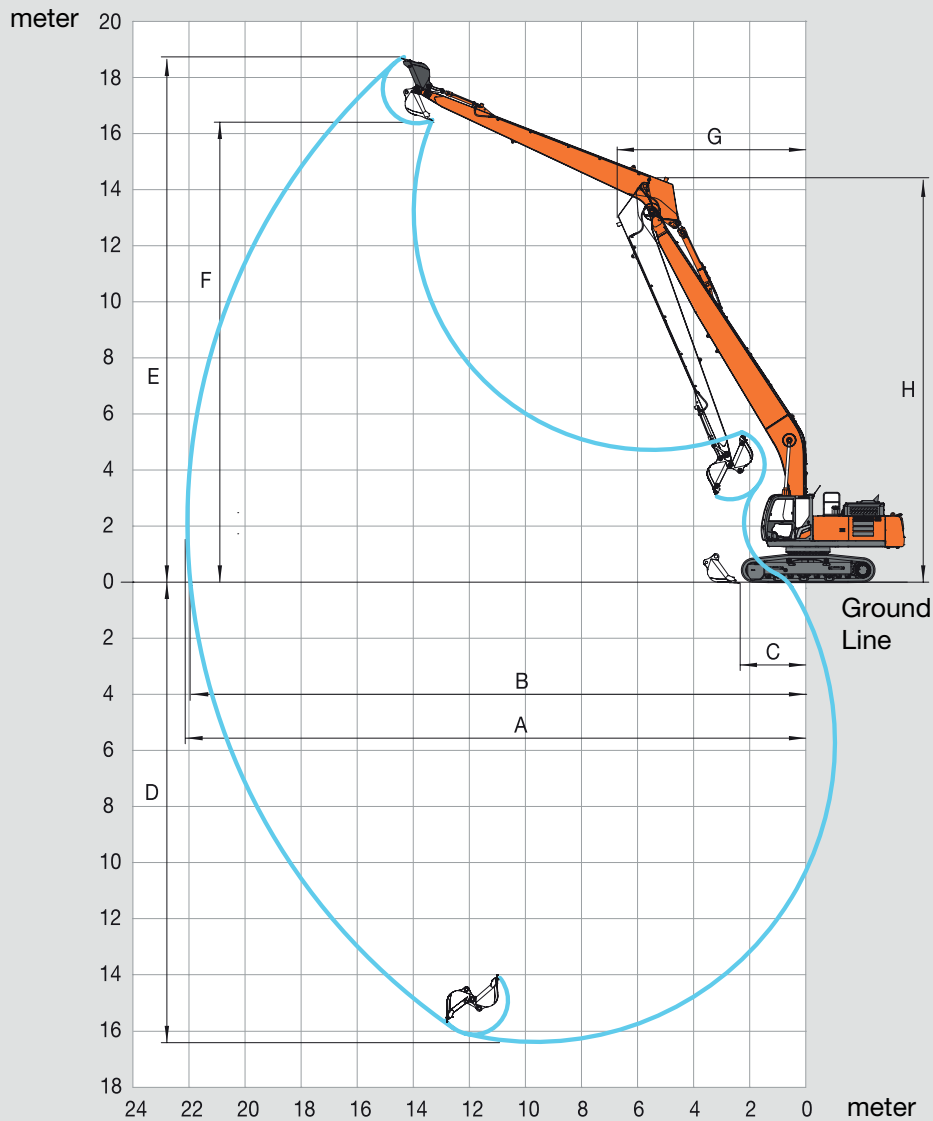


Unit: mm

	ZX350LC TYPE HE22	ZX350LCN TYPE HE22
A Distance between tumblers	4 050	4 050
B Undercarriage length	4 950	4 940
* C Counterweight clearance	1 160	1 160
D Rear-end swing radius	3 600	3 600
E Overall width of upper structure	2 990	2 990
F Overall height of cab	3 150	3 150
F' Overall height of handrail	3 220	3 220
* G Min. ground clearance	500	500
H Track gauge	2 590	2 390
I Track shoe width	600 / 700 / 800 / 900	600 / 700
J Undercarriage width	3 190 / 3 290 / 3 390 / 3 490	2 990 / 3 090
K Overall width	3 190 / 3 290 / 3 390 / 3 490	2 990 / 3 090
L Overall length	17 090	17 090
M Overall height of boom	3 400	3 400
N Track height with triple grouser shoes	1 070	1 070

* Excluding track shoe lug

WORKING RANGES



Unit: mm

	ZX350LC / ZX350LCN TYPE HE22
A Max. digging reach	22 070
B Max. digging reach (on ground)	21 970
C Max. level crowding distance	2 410
D Max. digging depth	16 430
E Max. cutting height	18 720
F Max. dumping height	16 360
G Min. swing radius	6 750
H Min. swing radius height	14 720
Bucket digging force ISO	64 kN (6 490 kgf)
Arm crowd force ISO	52 kN (5 330 kgf)

• Excluding track shoe lug

Note: Working range can be changed, depending on bucket size.

EQUIPMENT

● : Standard equipment ○ : Optional equipment

ENGINE	ZX250LC/ ZX250LCN	ZX300LC/ ZX300LCN	ZX350LC/ ZX350LCN
Aftertreatment device	●	●	●
Air cleaner double filters	●	●	●
Alternator 60 A	●	-	-
Alternator 90 A	-	●	●
Auto idle system	●	●	●
Auto shut-down control	●	●	●
Cartridge-type engine oil filter	●	●	●
Cartridge-type fuel main filter	●	●	●
Cold fuel resistance valve	●	●	●
ConSite OIL (sensor)*	●	●	●
DEF/AdBlue® tank inlet strainer and extension filler	●	●	●
DEF/AdBlue® tank with ISO magnet adapter	●	●	●
Dry-type air filter with evacuator valve (with air filter restriction indicator)	●	●	●
Dust-proof indoor net	●	●	●
ECO/PWR mode control	●	●	●
Electrical fuel feed pump	●	●	●
Engine oil drain coupler	●	●	●
Expansion tank	●	●	●
Fan guard	●	●	●
Fuel cooler	●	●	●
Fuel pre-filter with water separator	●	●	●
Isolation-mounted engine	●	●	●
Maintenance free pre-cleaner	○	○	○
Radiator, oil cooler and intercooler	●	●	●

HYDRAULIC SYSTEM			
Auto power lift	●	●	●
ConSite OIL (Sensor)*	●	●	●
Control valve with main relief valve	●	●	●
High mesh full flow filter	●	●	●
Hose rupture valve for arm	●	●	●
Hose rupture valve for boom	●	●	●
Pilot filter	●	●	●
Power boost	●	●	●
Restriction indicator for full flow filter	○	○	○
Suction filter	●	●	●
Swing dampener valve	●	●	●
Two extra ports for control valve	●	●	●
Variable relief valve for breaker and crusher	●	●	●
Work mode selector	●	●	●

CAB	ZX250LC/ ZX250LCN	ZX300LC/ ZX300LCN	ZX350LC/ ZX350LCN
All-weather sound suppressed steel cab	●	●	●
Auto control air conditioner	●	●	●
AUX function lever (breaker assist)	○	○	○
Bluetooth® integrated DAB+radio	●	●	●
Console height adjustment	●	●	●
CRES VII (centre pillar reinforced structure) cab	●	●	●
Drink holder with hot and cool function	●	●	●
Electric double horn	●	●	●
Engine shut-off switch	●	●	●
Equipped with reinforced, tinted (green colour) glass windows	●	●	●
Evacuation hammer	●	●	●
Floor mat	●	●	●
Footrest	●	●	●
Front window washer (2 points)	●	●	●
Glove compartment	●	●	●
Hands-free calling device	●	●	●
Hot and cool box	●	●	●
Intermittent windshield wipers	●	●	●
Key cylinder light	●	●	●
Laminated round glass window	○	○	○
LED room light with door courtesy	●	●	●
Magazine rack	●	●	●
OPG front guard Level II (ISO 10262 : 1998) compliant	○	○	○
OPG top guard Level I (ISO 10262 : 1998) compliant cab	●	●	●
OPG top guard Level II (ISO 10262) compliant	○	○	○
Parallel link wiper	●	●	●
Pilot shut-off lever	●	●	●
Power outlet 12 V and 24 V	●	●	●
Rain guard (without OPG front guard)	●	●	●
Rear tray	●	●	●
Retractable seat belt	●	●	●
ROPS (ISO 12117-2) compliant cab	●	●	●
Rubber radio antenna	●	●	●
Seat : air suspension seat with heater	●	●	●
Seat adjustment part : backrest, armrest, height and angle, slide forward / back	●	●	●
Seat belt reminder	●	●	●
Short wrist control levers	●	●	●
Smartphone holder	●	●	●
Sunscreen roller type (multi-use front or side and rear window)	○	○	○
Transparent roof with slide curtain	●	●	●
USB power supply	●	●	●
Windows on front, upper, lower and left side can be opened	●	●	●
2 speakers	●	●	●
4 fluid-filled elastic mounts	●	●	●
8 inch monitor	●	●	●

EQUIPMENT

● : Standard equipment ○ : Optional equipment

MONITOR SYSTEM	ZX250LC/ ZX250LCN	ZX300LC/ ZX300LCN	ZX350LC/ ZX350LCN
Alarms : overhear, engine warning, engine oil pressure, alternator, minimum fuel level, hydraulic filter restriction, air filter restriction, work mode, overload, SCR system trouble, etc	●	●	●
Alarm buzzers : overhear, engine oil pressure, overload, SCR system trouble, etc	●	●	●
Display of metres : water temperature, hour, fuel rate, clock, DEF/AdBlue® rate, etc	●	●	●
Other displays : work mode, auto-idle, glow, rearview monitor, operating conditions, etc	●	●	●
35 languages selection	●	●	●

LIGHTS			
Additional boom LED light with cover	○	○	○
Additional cab roof front LED lights	○	○	○
Additional cab roof rear LED light	○	○	○
LED lights for camera (side and rear view camera)	○	○	○
Rotating lamp	○	○	○
2 working LED lights	●	●	●

UPPER STRUCTURE			
Aerial Angle® (Side and rear view camera)	●	●	●
Batteries 2 x 120 Ah	●	-	-
Batteries 2 x 128 Ah	-	●	●
Battery disconnect switch	●	●	●
Body top handrail	●	●	●
Counterweight 7 750 kg	●	-	-
Counterweight 7 200 kg	-	●	-
Counterweight 8 870 kg	-	-	●
Additional counterweight 550 kg	-	○	-
Additional counterweight 1430 kg	-	-	○
Additional counterweight 1070 kg	-	-	○
Electric fuel refilling pump with auto stop and filter	●	●	●
Fuel level float	●	●	●
Hydraulic oil level gauge	●	●	●
Lockable fuel refilling cap	●	●	●
Lockable machine covers	●	●	●
Lockable tool box	●	●	●
Platform handrail	●	●	●
Skid-resistant plates	●	●	●
Swing parking brake	●	●	●
Undercover	●	●	●
Utility space	●	●	●

Standard and optional equipment may vary by country, so please consult your Hitachi dealer for details.

* Engine oil and hydraulic oil monitoring sensor.

** Hitachi Construction Machinery cannot be held liable for theft, any system will just minimize the risk of theft.

UNDERCARRIAGE	ZX250LC/ ZX250LCN	ZX300LC/ ZX300LCN	ZX350LC/ ZX350LCN
Bolt-on sprocket	●	●	●
Reinforced track links with pin seals	●	●	●
Shoe : 600 mm triple grouser	●	●	●
Towing hook	●	●	●
Track undercover	●	●	●
Travel direction mark on track frame	●	●	●
Travel motor covers	●	●	●
Travel parking brake	●	●	●
Upper and lower rollers	●	●	●
3 track guards (each side) and hydraulic track adjuster	●	●	●
4 tie down hooks	●	●	●

FRONT ATTACHMENTS			
Arm tip remote lubrication	●	●	●
Casted bucket link A	●	●	●
Centralised lubrication system	●	●	●
Dirt seal on all bucket pins	●	●	●
Flanged pin	●	●	●
HN bushing	●	●	●
Lower arm reinforcement	○	○	○
Reinforced resin thrust plate	●	●	●
WC (tungsten-carbide) thermal spraying	●	●	●
Welded bucket link A with welded hook	○	○	-

ATTACHMENTS			
Breaker and crusher piping	-	-	-
Pilot accumulator	●	●	●
Accessories for 2 speed selector	○	○	○
Additional pump (30 L/min)	○	○	○
Assist piping	○	○	○

MISCELLANEOUS			
ConSite	○	○	○
Global e-Service	●	●	●
Onboard information controller	●	●	●
Standard tool kit	●	●	●
Theft prevention system**	○	○	○

SPECIFICATIONS

ZX490LCH-7 TYPE HE16LD SUPER LONG FRONT

ENGINE

Model	Isuzu 6WG1
Type	4-cycle water-cooled, common rail direct injection
Aspiration	Variable geometry turbocharged, intercooled, cooled EGR
Aftertreatment	DOC+CSF+SCR system
No. of cylinders	6
Rated power	
ISO 14396	296 kW at 1 800 min ⁻¹
ISO 9249, net	295 kW at 1 800 min ⁻¹
Maximum torque	2 050 Nm at 1 300 min ⁻¹
Piston displacement	15.681 L
Bore and stroke	147 mm x 154 mm
Batteries	2 x 12 V / 170 Ah

HYDRAULIC SYSTEM

Hydraulic Pumps

Main pumps	2 variable displacement axial piston pumps
Maximum oil flow	2 x 385 L/min
Pilot pump	1 gear pump
Maximum oil flow	30 L/min

Hydraulic Motors

Travel	2 variable displacement axial piston motors
Swing	1 axial piston motor

Relief Valve Settings

Implement circuit	31.9 MPa
Swing circuit	28.4 MPa
Travel circuit	35.3 MPa
Pilot circuit	3.9 MPa

Hydraulic Cylinders

	Quantity	Bore	Rod diameter
Boom	2	170 mm	115 mm
Arm	1	190 mm	130 mm
Bucket	1	140 mm	95 mm

UPPER STRUCTURE

Revolving Frame

D-section frame for resistance to deformation.

Swing Device

Axial piston motor with planetary reduction gear is bathed in oil. Swing parking brake is spring-set/hydraulic-released disc type.

Swing speed 9.6 min⁻¹ (rpm)

UNDERCARRIAGE

Tracks

Track shoes with triple grousers made of induction-hardened rolled alloy. Heat-treated connecting pins with dirt seals. Hydraulic (grease) track adjusters with shock-absorbing recoil springs.

Numbers of Rollers and Shoes on Each Side

Upper rollers	3
Lower rollers	9
Track shoes	53
Track guard	2

Travel Device

Each track driven by axial piston motor through reduction gear for counterrotation of the tracks. Parking brake is spring-set/hydraulic-released disc type.

Automatic transmission system : High-Low.

Travel speeds	High : 0 to 5.5 km/h
	Low : 0 to 3.7km/h

Maximum traction force ... 329 kN

Gradeability 58% (30 degree) continuous

ENVIRONMENT

Engine Emissions

EU Stage V

Sound Level

Sound level in cab according to ISO 6396Lpa 70 dB(A)
 External sound level according to ISO 6395 and
 EU Directive 2000/14/ECLwA 107 dB(A)

Air Conditioning System

The air conditioning system contains fluorinated greenhouse gas.
 Refrigerant type : HFC-134a, GWP : 1430, Amount :1.10 kg, CO₂e : 1.57 ton.

SERVICE REFILL CAPACITIES

Fuel tank	675.0
Engine coolant	70.0
Engine oil	62.0
Swing device	6.5
Travel device (each side)	11.0
Hydraulic system	510.0
Hydraulic oil tank	310.0
DEF/AdBlue® tank	95.0

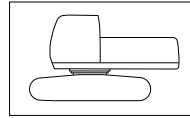
WEIGHTS AND GROUND PRESSURE

ZX490LCH TYPE HE16LD SUPER LONG FRONT:

Equipped with 9.50 m monoblock boom, 6.40 m arm and 1.15 m³ bucket (SAE, PCSA heaped), 9 780 kg counterweight.

Shoe type	Shoe width	Operating weight	Ground pressure
Triple grouser	600 mm	51 500 kg	86 kPa (0.88 kgf/cm ²)
	750 mm	52 300 kg	70 kPa (0.71 kgf/cm ²)
	900 mm	52 900 kg	59 kPa (0.60 kgf/cm ²)

Basic Machine Weight and Overall width



Excluding front end attachment, fuel, hydraulic oil and coolant etc. Including counterweight.

ZX490LCH-7

Shoe width	Weight	Overall width (Retracted/Extended)
600 mm	41 500 kg	2 990 / 3 490 mm
750 mm	42 300 kg	3 140 / 3 640 mm
900 mm	43 000 kg	3 290 / 3 790mm

BUCKET SPECIFICATIONS AND COMPATIBILITY

ZX490LCH-7

	Capacity ISO heaped	Width Without side cutters	Weight	Recommendation
				ZX490LCH-7
				HE16LD
Bucket radius 1 060 mm	1.15 m ³	1 100 mm	1 080 kg	◎
	1.40 m ³	1 280 mm	1 170 kg	□
	1.62 m ³	1 460 mm	1 260 kg	□
Max. weight				3 200 kg

◎ Suitable for materials with density of 1 800 kg/m³ or less

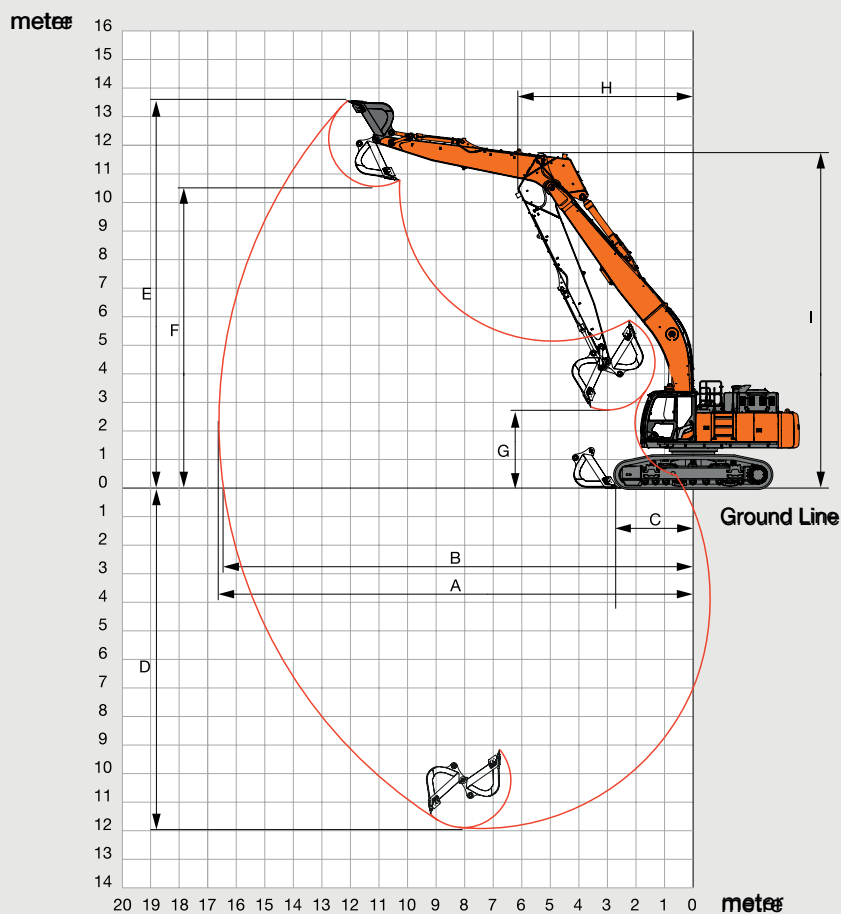
□ Suitable for materials with density of 1 100 kg/m³ or less

◇ Slope-finishing service

SPECIFICATIONS

ZX490LCH-7 TYPE HE16LD SUPER LONG FRONT

WORKING RANGES

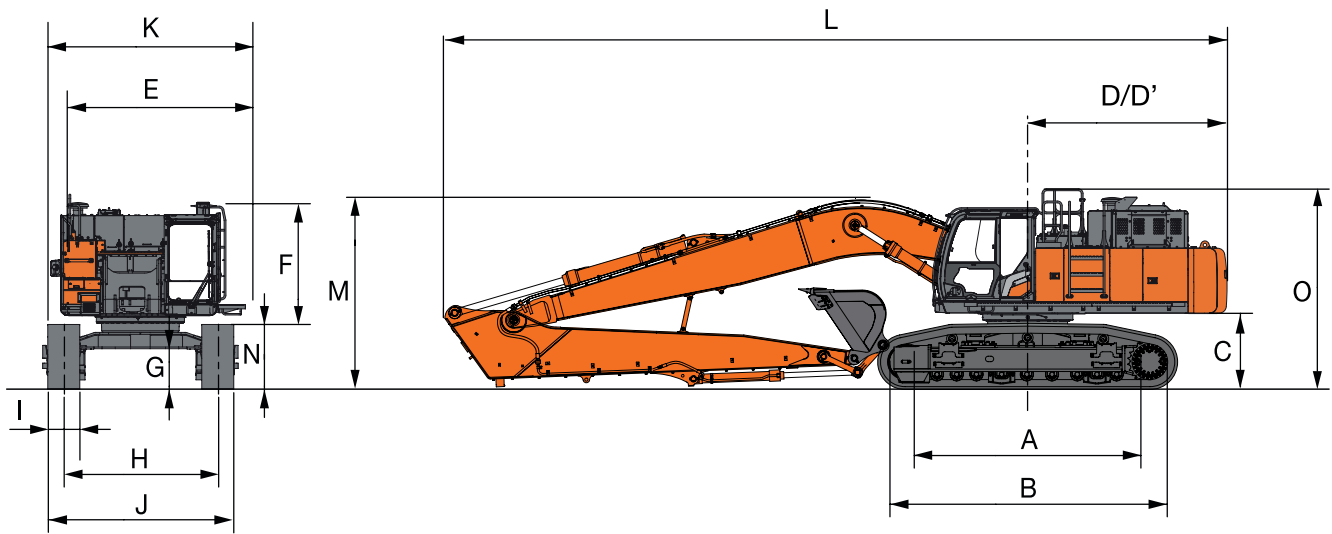


Unit: mm

	ZX490LCH-7 TYPE HE16LD
A Max. digging reach	16 570
B Max. digging reach (on ground)	16 410
C Min. level crowding distance	2 510
D Max. digging depth	11 910
E Max. cutting height	13 540
F Max. dumping height	2 730
G Min. dumping height	10 550
H Min. swing radius	6 170
I Min. swing radius height	11 710
Bucket digging force ISO	178 kN
Arm crowd force ISO	124 kN

- Excluding track shoe lug

DIMENSIONS



Unit: mm

		ZX490LCH *2		
A	Distance between tumbler	4 470		
B	Undercarriage length	5 470		
*1 C	Counterweight clearance	1 360		
D	Rear-end swing radius	3 670		
D'	Rear-end length	3 660		
E	Overall width of upper structure	3 480		
F	Overall height of cab	3 330		
*1 G	Min. ground clearance	737		
H	Track gauge Extended / Retracted	2 890 / 2390		
I	Track shoe width	G 600		
J	Undercarriage width : Extended / Retracted	G 600	G 750	G 900
		3 490 / 2990	3 640 / 3 140	3 790 / 3 290
K	Overall width	3 820		
L	Overall length	14 580		
M	Overall height of boom	3 560		
N	Track height	1 220		
O	Overall height of base machine	3 710		

*1 Excluding track shoe lug G: Grouser shoe

*2 Equipped with Boom 9.5 m and Arm 6.4 m

LIFTING CAPACITIES

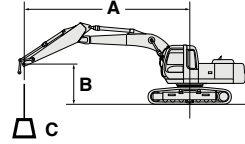
ZX490LCH HE16LD

Metric measure

Notes: 1. Ratings are based on ISO 10567.

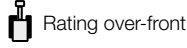
- Lifting capacity of the ZAXIS series does not exceed 75% of tipping load with the machine on firm, level ground or 87% full hydraulic capacity.
- The load point is the center-line of the bucket pivot mounting pin on the arm.
- * Indicates load limited by hydraulic capacity.
- 0m = Ground.

For lifting capacities, subtract bucket and quick hitch weight from lifting capacities.



- A: Load radius
- B: Load point height
- C: Lifting capacity

ZX490LCH HE16LD SUPER LONG FRONT



Rating over-front



Rating over-side or 360 degrees

Unit: kg

Conditions	Load point height m	Load radius												At max. reach			
		4m		6m		8m		10m		12m		14m		metre	Rating over-front	Rating over-side or 360 degrees	
		Rating over-front	Rating over-side or 360 degrees	Rating over-front	Rating over-side or 360 degrees	Rating over-front	Rating over-side or 360 degrees	Rating over-front	Rating over-side or 360 degrees	Rating over-front	Rating over-side or 360 degrees						
Boom 9.5 m	12																
Arm 6.4 m	10									4 400*	4 400*			11.2	3.28*	3.28*	
Counterweight 9.8t	8									4 670*	4 670*			12.7	3.15*	3.15*	
	6									4 930*	4 930*			13.7	3.14*	3.14*	
	4	1 630*	1 630*	1 021*	1 021*	7 610*	7.61*	5 580*	5 580*	4 930*	4 930*	4 280*	3 950	14.4	3.22*	3.22*	
	2	7 030*	7 030*	1 215*	1 215*	8 650*	8.65*	6 180*	6 180*	5 270*	5 060	4 660*	3 810	14.8	3.43*	3.43*	
	0 (Ground)	7 030*	7 030*	1 330*	1 188*	9 420*	8 070	7 260*	5 920	5 630*	4 760	4 840*	3 660	14.9	3.72*	3.26	
	-2	9 230*	9 230*	1 353*	1 144*	9 760*	7 680	7 510*	5 650	5 910*	4 510	4 960*	3 530	14.7	4.14*	3.24	
	-4	1 217*	1 217*	1 301*	1 144*	9 610*	7 570	7 430*	5 550	5 890*	4 310			13.5	4.92*	3.67	
	-6	1 577*	1 577*	1 177*	1 172*	8 890*	7 690	6 880*	5 630	5 280*	4 410			12.3	4.99*	4.25	
	-8	1 278*	1 278*	9 660*	9 660*	7 420*	7 420*	5 580*	5 580*					10.7	4.91*	4.91*	
	-10			6 170*	6 170*	4 580*	4 580*							8.3	4.26*	4.26*	

* Indicates load limited by hydraulic capacity

EQUIPMENT

● : Standard equipment ○ : Optional equipment — : Not applicable

ENGINE	ZX490LCH
Aftertreatment device	●
Air cleaner double filters	●
Alternator 90 A	●
Auto idle system	●
Auto shut-down control	●
Cartridge-type engine oil filter	●
Cartridge-type fuel main filter	●
ConSite OIL (sensor)*	●
DEF/AdBlue® tank inlet strainer and extension filler	●
DEF/AdBlue® tank with ISO magnet adapter	●
Dry-type air filter with evacuator valve (with air filter restriction indicator)	●
Dust-proof net	●
ECO / PWR / HP mode control	●
Electrical fuel feed pump	●
Engine oil drain coupler	●
Expansion tank	●
Fan guard	●
Fuel cooler	●
Fuel pre-filter with water separator	●
Isolation-mounted engine	●
Maintenance free pre-cleaner	●
Radiator, oil cooler and intercooler	●
Reversible fan	●

HYDRAULIC SYSTEM	ZX490LCH
Auto power lift	●
Boom mode selector system	●
ConSite OIL (sensor)*	●
Control valve with main relief valve	●
Drain filter	●
Engine speed sensing system	●
Extra port for control valve	●
Hose rupture valve for arm	●
Hose rupture valve for boom	●
Pilot filter	●
Shockless valve in pilot circuit	●
Suction filter	●
Work mode selector	●

CAB	ZX490LCH
All-weather sound suppressed steel cab	●
Auto control air conditioner	●
Bluetooth® integrated DAB+ radio	●
Console height adjustment	●
CRES VII (centre pillar reinforced structure) cab	●
Demolition cab with P5A glass and improved visibility	○
Drink holder with hot and cool function	●
Electric double horn	●
Engine shut-off switch	●
Equipped with reinforced, tinted (green colour) glass windows	●
Evacuation hammer	●
Floor mat	●
Footrest	●
Front window washer (2 points)	●
Glove compartment	●

UNDERCARRIAGE	ZX490LCH
Hands-free calling device	●
Hot and cool box	●
Intermittent windshield wiper	●
Key cylinder light	●
Laminated round glass front window	●
Laminated straight glass front window	-
LED room light	●
Magazine rack	●
OPG front guard Level II (ISO10262) compliant	○
OPG top guard Level I (ISO10262) compliant	●
OPG top guard Level II (ISO10262) compliant	○
Pilot shut-off lever	●
Power outlet 12 V and 24 V	●
Rain guard (without OPG front guard)	●
Rear tray	●
Retractable seat belt	●
ROPS (ISO12117-2) compliant cab	●
Rubber radio antenna	●
Seat : air suspension seat with heater	●
Seat adjustment part : backrest, armrest, height and angle, slide forward / back	●
Seat belt reminder	●
Short wrist control levers	●
Smartphone holder	●
Sunscreen roller type (multi-use front or side and rear window)	●
Transparent roof with slide curtain	●
USB power supply	●
Wide view wiper	●
Windows on front, upper and lower side can be opened	●
Windows on left side can be opened	●
2 speakers	●
6 fluid-filled elastic mounts	●
8 inch monitor	●

MONITOR SYSTEM	ZX490LCH
Alarms : overheat, engine warning, engine oil pressure, alternator, minimum fuel level, hydraulic filter restriction, air filter restriction, work mode, overload, SCR system trouble, etc	●
Alarm buzzers : overheat, engine oil pressure, overload, SCR system trouble, etc	●
Display of metres : water temperature, hour, fuel rate, clock, DEF/AdBlue® rate, etc	●
Other displays : work mode, auto-idle, glow, rear view monitor, side view monitor, operating conditions, etc	●
35 languages selection	●

LIGHTS	ZX490LCH
Additional boom LED light with cover	○
Additional cab roof front 2 LED lights	○
Additional cab roof front 4 LED lights	○
Additional cab roof rear LED lights	○
LED lights for camera (side and rear view camera)	○
Rotating lamp	○
2 working LED lights	●

EQUIPMENT

UPPER STRUCTURE	ZX490LCH
Aerial Angle® (side and rear view camera)	●
Auto-grease lubricator (without bucket and link pins)	●
Batteries 2 x 170 Ah	●
Body top handrail	●
Counterweight 9 080 kg	-
Counterweight 9 780 kg	●
Electric fuel refilling pump with auto stop and filter	●
Electrical grease pump with hose-reel	●
Fuel level float	●
Hydraulic oil level gauge	●
Ladder	●
Lockable fuel refilling cap	●
Lockable machine covers	●
Lockable tool box	●
Platform handrail	●
Sidewalk (cab side)	●
Skid-resistant plates and handrails	●
Swing parking brake	●
Undercover	●
Utility space	●
2 way disconnect switch	●

UNDERCARRIAGE	ZX490LCH
Bolt-on sprocket	●
Full track guard and hydraulic track adjuster	-
Reinforced track links with pin seals	●
Shoe : 600 mm double grouser	○
Shoe : 600 mm triple grouser	●
Shoe : 750 mm triple grouser	○
Shoe : 900 mm triple grouser	○
Track undercover	●
Travel direction mark on track frame	●
Travel motor covers	●
Travel parking brake	●
Upper and lower rollers	●
2 track guards (each side) and hydraulic track adjuster	●
4 tie down hooks	●

● : Standard equipment ○ : Optional equipment - : Not applicable

FRONT ATTACHMENTS	ZX490LCH
Arm 6.4 m	●
Boom 9.5 m	●
Centralised lubrication system	●
Cylinder hose protectors arm	●
Cylinder hose protectors boom	●
Cylinder hose protectors bucket	●
Damage prevention plate and square bars	●
Dirt seal on all bucket pins	●
Flanged pin	●
Casted bucket link A	●
Reinforced link B	●

ATTACHMENTS	ZX490LCH
Pilot accumulator	●
Accessories for 2 speed selector	●

MISCELLANEOUS	ZX490LCH
ConSite	○
Global e-Service	●
Onboard information controller	●
Standard tool kit	●
Theft prevention system**	○

Standard and optional equipment may vary by country, so please consult your Hitachi dealer for details.

* Engine oil and hydraulic oil monitoring sensor.

** Hitachi Construction Machinery cannot be held liable for theft, any system will just minimize the risk of theft.

Prior to operating this machine, including satellite communication system, in a country other than a country of its intended use, it may be necessary to make modifications to it so that it complies with the local regulatory standards (including safety standards) and legal requirements of that particular country. Please do not export or operate this machine outside the country of its intended use until such compliance has been confirmed. Please contact your Hitachi dealer in case of questions about compliance.

These specifications are subject to change without notice. Illustrations and photos show the standard models, and may or may not include optional equipment, accessories, and all standard equipment with some differences in colour and features. Before use, read and understand the Operator's Manual for proper operation.

